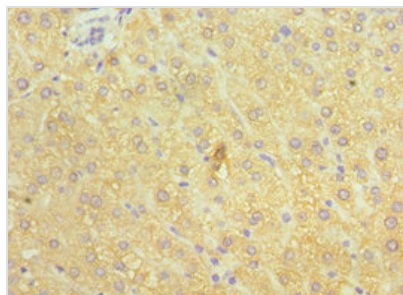




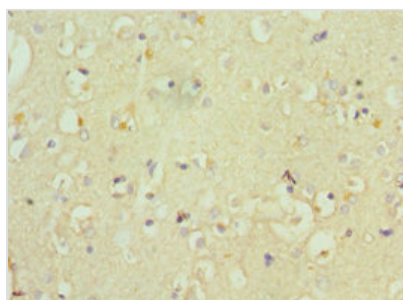
ATP7B Antibody

Product Code	CSB-PA002415ESR2HU
Storage	Upon receipt, store at -20°C or -80°C. Avoid repeated freeze.
Uniprot No.	P35670
Immunogen	Recombinant Human Copper-transporting ATPase 2 protein (1166-1465AA)
Raised In	Rabbit
Species Reactivity	Human
Tested Applications	ELISA, IHC; Recommended dilution: IHC:1:20-1:200
Form	Liquid
Conjugate	Non-conjugated
Storage Buffer	PBS with 0.02% sodium azide, 50% glycerol, pH7.3.
Purification Method	Antigen Affinity Purified
Isotype	IgG
Clonality	Polyclonal
Alias	Copper-transporting ATPase 2 (EC 3.6.3.54) (Copper pump 2) (Wilson disease-associated protein) [Cleaved into: WND/140 kDa], ATP7B, PWD WC1 WND
Immunogen Species	Homo sapiens (Human)
Research Area	Signal Transduction
Target Names	ATP7B

Image



Immunohistochemistry of paraffin-embedded human liver tissue using CSB-PA002415ESR2HU at dilution of 1:100



Immunohistochemistry of paraffin-embedded human brain tissue using CSB-PA002415ESR2HU at dilution of 1:100