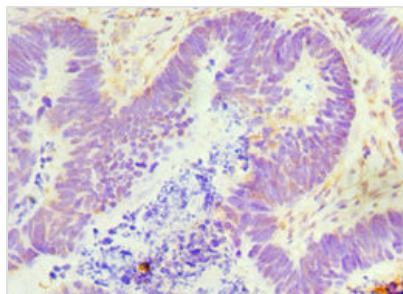




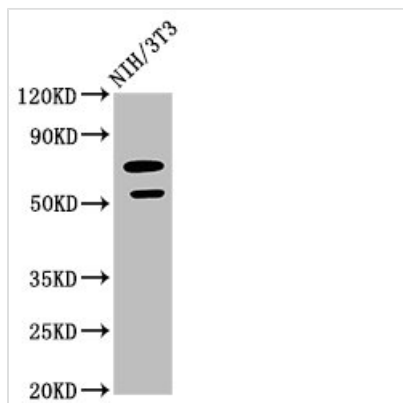
GDF5 Antibody

Product Code	CSB-PA009349ESR1HU
Storage	Upon receipt, store at -20°C or -80°C. Avoid repeated freeze.
Uniprot No.	P43026
Immunogen	Recombinant Human Growth/differentiation factor 5 protein (202-501AA)
Raised In	Rabbit
Species Reactivity	Human
Tested Applications	ELISA, WB, IHC, IF; Recommended dilution: WB:1:500-1:5000, IHC:1:20-1:200, IF:1:20-1:200
Form	Liquid
Conjugate	Non-conjugated
Storage Buffer	PBS with 0.02% sodium azide, 50% glycerol, pH7.3.
Purification Method	Antigen Affinity Purified
Isotype	IgG
Clonality	Polyclonal
Alias	Growth/differentiation factor 5 (GDF-5) (Bone morphogenetic protein 14) (BMP-14) (Cartilage-derived morphogenetic protein 1) (CDMP-1) (Lipopolysaccharide-associated protein 4) (LAP-4) (LPS-associated protein 4) (Radotermine), GDF5, BMP14 CDMP1
Immunogen Species	Homo sapiens (Human)
Research Area	Cardiovascular
Target Names	GDF5

Image



Immunohistochemistry of paraffin-embedded human ovarian cancer using CSB-PA009349ESR1HU at dilution of 1:100



Western Blot

Positive WB detected in: NIH/3T3 whole cell lysate

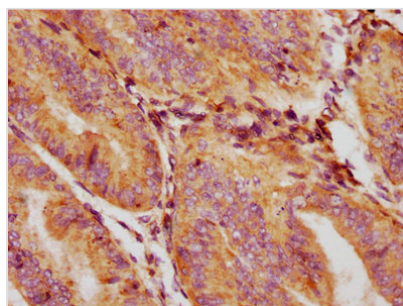
All lanes: GDF5 antibody at 2.64μg/ml

Secondary

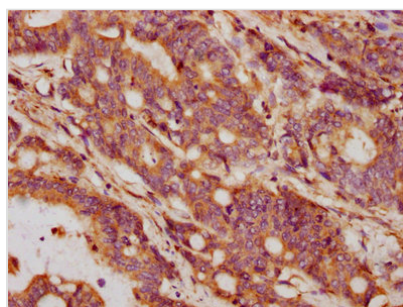
Goat polyclonal to rabbit IgG at 1/50000 dilution

Predicted band size: 56 kDa

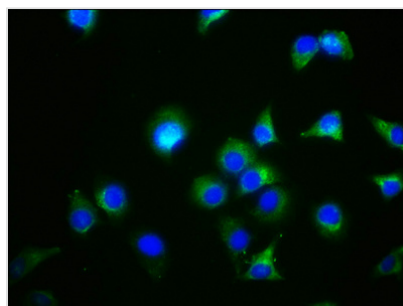
Observed band size: 56 kDa



IHC image of CSB-PA009349ESR1HU diluted at 1:132 and staining in paraffin-embedded human endometrial cancer performed on a Leica BondTM system. After dewaxing and hydration, antigen retrieval was mediated by high pressure in a citrate buffer (pH 6.0). Section was blocked with 10% normal goat serum 30min at RT. Then primary antibody (1% BSA) was incubated at 4°C overnight. The primary is detected by a biotinylated secondary antibody and visualized using an HRP conjugated SP system.



IHC image of CSB-PA009349ESR1HU diluted at 1:132 and staining in paraffin-embedded human colon cancer performed on a Leica BondTM system. After dewaxing and hydration, antigen retrieval was mediated by high pressure in a citrate buffer (pH 6.0). Section was blocked with 10% normal goat serum 30min at RT. Then primary antibody (1% BSA) was incubated at 4°C overnight. The primary is detected by a biotinylated secondary antibody and visualized using an HRP conjugated SP system.



Immunofluorescence staining of A549 cells with CSB-PA009349ESR1HU at 1:44, counter-stained with DAPI. The cells were fixed in 4% formaldehyde, permeabilized using 0.2% Triton X-100 and blocked in 10% normal Goat Serum. The cells were then incubated with the antibody overnight at 4°C. The secondary antibody was Alexa Fluor 488-conjugated AffiniPure Goat Anti-Rabbit IgG(H+L).