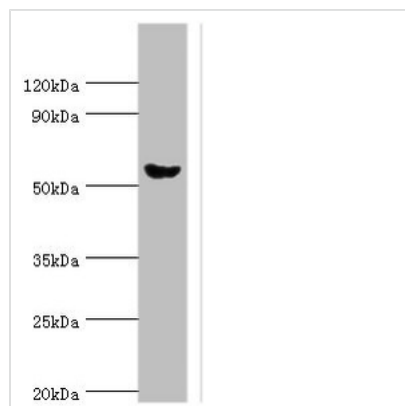




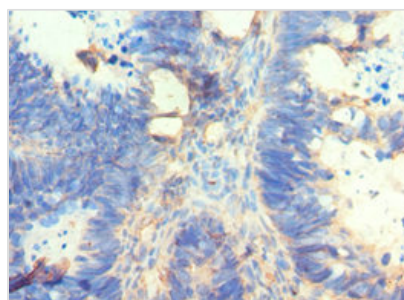
AMY2A Antibody

Product Code	CSB-PA001689ESR2HU
Storage	Upon receipt, store at -20°C or -80°C. Avoid repeated freeze.
Uniprot No.	P04746
Immunogen	Recombinant Human Pancreatic alpha-amylase protein (242-511AA)
Raised In	Rabbit
Species Reactivity	Human, Mouse
Tested Applications	ELISA, WB, IHC; Recommended dilution: WB:1:500-1:2000, IHC:1:20-1:200
Form	Liquid
Conjugate	Non-conjugated
Storage Buffer	PBS with 0.02% sodium azide, 50% glycerol, pH7.3.
Purification Method	Antigen Affinity Purified
Isotype	IgG
Clonality	Polyclonal
Alias	Pancreatic alpha-amylase (PA) (EC 3.2.1.1) (1,4-alpha-D-glucan glucanohydrolase), AMY2A
Immunogen Species	Homo sapiens (Human)
Research Area	Tags & Cell Markers
Target Names	AMY2A

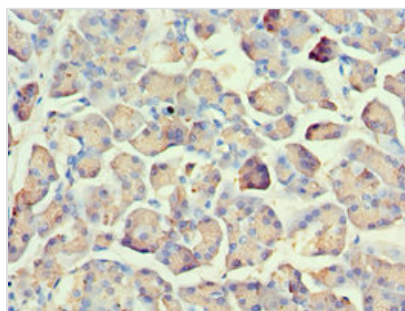
Image



Western blot
All lanes: Pancreatic alpha-amylase antibody at 6µg/ml + Mouse liver tissue
Secondary
Goat polyclonal to rabbit IgG at 1/10000 dilution
Predicted band size: 58, 31 kDa
Observed band size: 58 kDa



Immunohistochemistry of paraffin-embedded human ovarian cancer using CSB-PA001689ESR2HU at dilution of 1:100



Immunohistochemistry of paraffin-embedded human pancreatic tissue using CSB-PA001689ESR2HU at dilution of 1:100