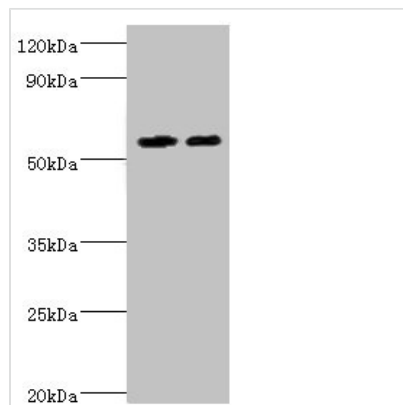




# ALDH4A1 Antibody

<b>Product Code</b>	CSB-PA001576ESR2HU
<b>Storage</b>	Upon receipt, store at -20°C or -80°C. Avoid repeated freeze.
<b>Uniprot No.</b>	P30038
<b>Immunogen</b>	Recombinant Human Delta-1-pyrroline-5-carboxylate dehydrogenase, mitochondrial protein (354-563AA)
<b>Raised In</b>	Rabbit
<b>Species Reactivity</b>	Human
<b>Tested Applications</b>	ELISA, WB, IHC; Recommended dilution: WB:1:500-1:2000, IHC:1:20-1:200
<b>Form</b>	Liquid
<b>Conjugate</b>	Non-conjugated
<b>Storage Buffer</b>	PBS with 0.02% sodium azide, 50% glycerol, pH7.3.
<b>Purification Method</b>	Antigen Affinity Purified
<b>Isotype</b>	IgG
<b>Clonality</b>	Polyclonal
<b>Alias</b>	Delta-1-pyrroline-5-carboxylate dehydrogenase, mitochondrial (P5C dehydrogenase) (EC 1.2.1.88) (Aldehyde dehydrogenase family 4 member A1) (L-glutamate gamma-semialdehyde dehydrogenase), ALDH4A1, ALDH4 P5CDH
<b>Immunogen Species</b>	Homo sapiens (Human)
<b>Research Area</b>	Tags & Cell Markers
<b>Target Names</b>	ALDH4A1

## Image



### Western blot

All lanes: ALDH4A1 antibody at 13µg/ml

Lane 1: K562 whole cell lysate

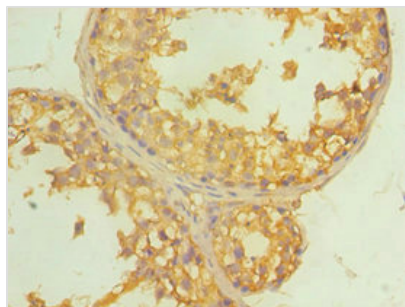
Lane 2: 293T whole cell lysate

Secondary

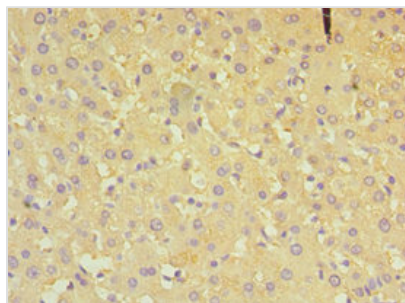
Goat polyclonal to rabbit IgG at 1/10000 dilution

Predicted band size: 62, 56, 57 kDa

Observed band size: 62 kDa



Immunohistochemistry of paraffin-embedded human testis tissue using CSB-PA001576ESR2HU at dilution of 1:100



Immunohistochemistry of paraffin-embedded human liver tissue using CSB-PA001576ESR2HU at dilution of 1:100

## Usage

For Research Use Only. Not for use in diagnostic or therapeutic procedures.