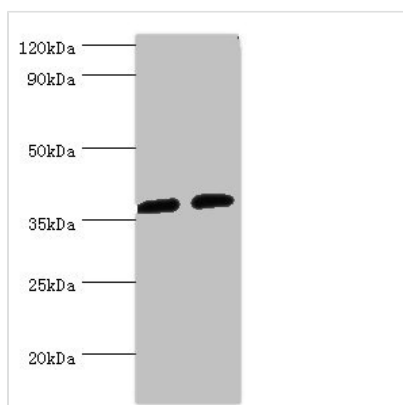




AKR1C3 Antibody

Product Code	CSB-PA001544ESR1HU
Storage	Upon receipt, store at -20°C or -80°C. Avoid repeated freeze.
Uniprot No.	P42330
Immunogen	Recombinant Human Aldo-keto reductase family 1 member C3 protein (1-323AA)
Raised In	Rabbit
Species Reactivity	Human
Tested Applications	ELISA, WB, IHC, IP; Recommended dilution: WB:1:500-1:5000, IHC:1:20-1:200, IP:1:200-1:2000
Form	Liquid
Conjugate	Non-conjugated
Storage Buffer	PBS with 0.02% sodium azide, 50% glycerol, pH7.3.
Purification Method	Antigen Affinity Purified
Isotype	IgG
Clonality	Polyclonal
Alias	Aldo-keto reductase family 1 member C3 (EC 1.-.-) (17-beta-hydroxysteroid dehydrogenase type 5) (17-beta-HSD 5) (3-alpha-HSD type II, brain) (3-alpha-hydroxysteroid dehydrogenase type 2) (3-alpha-HSD type 2) (EC 1.1.1.357) (Chlordecone reductase homolog HAKRb) (Dihydrodiol dehydrogenase 3) (DD-3) (DD3) (Dihydrodiol dehydrogenase type I) (HA1753) (Indanol dehydrogenase) (EC 1.1.1.112) (Prostaglandin F synthase) (PGFS) (EC 1.1.1.188) (Testosterone 17-beta-dehydrogenase 5) (EC 1.1.1.239) (EC 1.1.1.64) (Trans-1,2-dihydrobenzene-1,2-diol dehydrogenase) (EC 1.3.1.20), AKR1C3, DDH1 HSD17B5 KIAA0119 PGFS
Immunogen Species	Homo sapiens (Human)
Research Area	Signal Transduction
Target Names	AKR1C3

Image



Western blot

All lanes: AKR1C3 antibody at 8µg/ml

Lane 1: K562 whole cell lysate

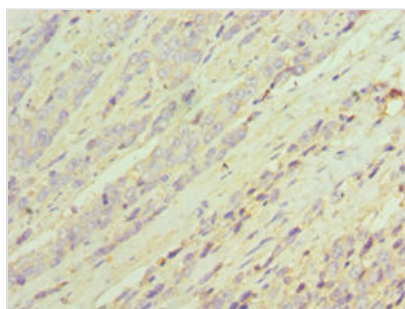
Lane 2: Hela whole cell lysate

Secondary

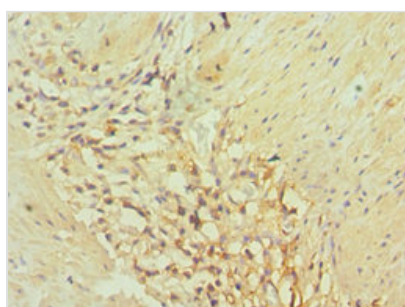
Goat polyclonal to rabbit IgG at 1/10000 dilution

Predicted band size: 37, 24 kDa

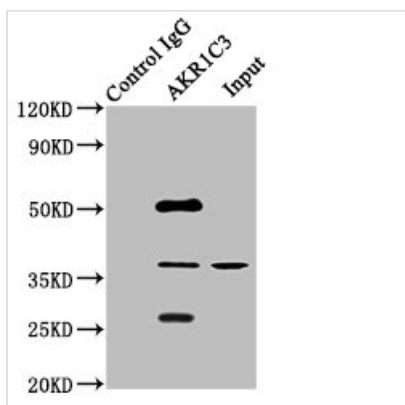
Observed band size: 37 kDa



Immunohistochemistry of paraffin-embedded human colon cancer using CSB-PA001544ESR1HU at dilution of 1:100



Immunohistochemistry of paraffin-embedded human gallbladder tissue using CSB-PA001544ESR1HU at dilution of 1:100



Immunoprecipitating AKR1C3 in HepG2 whole cell lysate

Lane 1: Rabbit control IgG instead of CSB-PA001544ESR1HU in HepG2 whole cell lysate. For western blotting, a HRP-conjugated Protein G antibody was used as the secondary antibody (1/2000)

Lane 2: CSB-PA001544ESR1HU (8µg) + HepG2 whole cell lysate (500µg)

Lane 3: HepG2 whole cell lysate (10µg)

Usage

For Research Use Only. Not for use in diagnostic or therapeutic procedures.