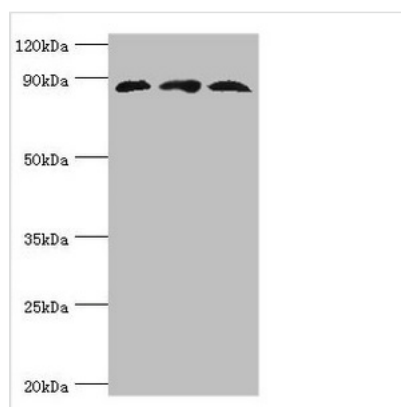




CUL1 Antibody

Product Code	CSB-PA614436ESR1HU
Storage	Upon receipt, store at -20°C or -80°C. Avoid repeated freeze.
Uniprot No.	Q13616
Immunogen	Recombinant Human Cullin-1 protein (500-776AA)
Raised In	Rabbit
Species Reactivity	Human
Tested Applications	ELISA, WB; Recommended dilution: WB:1:500-1:1000
Form	Liquid
Conjugate	Non-conjugated
Storage Buffer	PBS with 0.02% sodium azide, 50% glycerol, pH7.3.
Purification Method	Antigen Affinity Purified
Isotype	IgG
Clonality	Polyclonal
Alias	Cullin-1 (CUL-1), CUL1
Immunogen Species	Homo sapiens (Human)
Research Area	Cell Biology
Target Names	CUL1

Image



Western blot

All lanes: Cullin-1 antibody at 6µg/ml

Lane 1: PC-3 whole cell lysate

Lane 2: K562 whole cell lysate

Lane 3: HeLa whole cell lysate

Secondary

Goat polyclonal to rabbit IgG at 1/10000 dilution

Predicted band size: 90 kDa

Observed band size: 90 kDa

Usage

For Research Use Only. Not for use in diagnostic or therapeutic procedures.