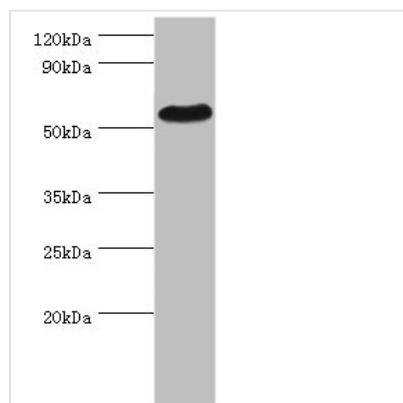




PSEN1 Antibody

Product Code	CSB-PA018846ESR2HU
Storage	Upon receipt, store at -20°C or -80°C. Avoid repeated freeze.
Uniprot No.	P49768
Immunogen	Recombinant Human Presenilin-1 protein (1-160AA)
Raised In	Rabbit
Species Reactivity	Human
Tested Applications	ELISA, WB, IHC; Recommended dilution: WB:1:500-1:2000, IHC:1:20-1:200
Form	Liquid
Conjugate	Non-conjugated
Storage Buffer	PBS with 0.02% sodium azide, 50% glycerol, pH7.3.
Purification Method	Antigen Affinity Purified
Isotype	IgG
Clonality	Polyclonal
Alias	Presenilin-1 (PS-1) (EC 3.4.23.-) (Protein S182) [Cleaved into: Presenilin-1 NTF subunit; Presenilin-1 CTF subunit; Presenilin-1 CTF12 (PS1-CTF12)], PSEN1, AD3 PS1 PSNL1
Immunogen Species	Homo sapiens (Human)
Research Area	Neuroscience
Target Names	PSEN1

Image



Western blot

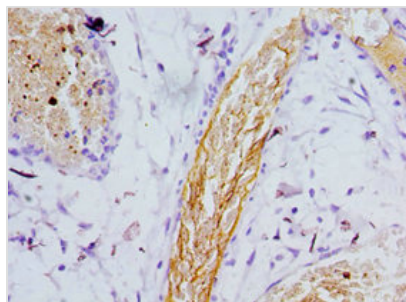
All lanes: PSEN1 antibody at 2µg/ml + HeLa whole cell lysate

Secondary

Goat polyclonal to rabbit IgG at 1/10000 dilution

Predicted band size: 53, 43, 22, 47, 49 kDa

Observed band size: 53 kDa



Immunohistochemistry of paraffin-embedded human epityphlon tissue using CSB-PA018846ESR2HU at dilution of 1:100

Usage

For Research Use Only. Not for use in diagnostic or therapeutic procedures.