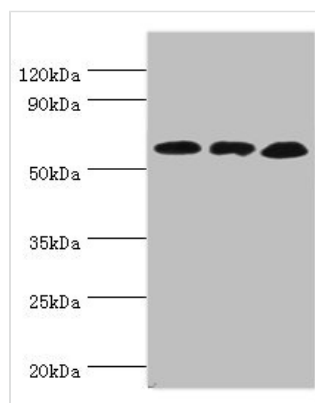




GLUD2 Antibody

| | |
|----------------------------|--|
| Product Code | CSB-PA009545ESR2HU |
| Storage | Upon receipt, store at -20°C or -80°C. Avoid repeated freeze. |
| Uniprot No. | P49448 |
| Immunogen | Recombinant Human Glutamate dehydrogenase 2, mitochondrial protein (319-558AA) |
| Raised In | Rabbit |
| Species Reactivity | Human, Mouse, Rat |
| Tested Applications | ELISA, WB, IHC; Recommended dilution: WB:1:500-1:2000, IHC:1:20-1:200 |
| Form | Liquid |
| Conjugate | Non-conjugated |
| Storage Buffer | PBS with 0.02% sodium azide, 50% glycerol, pH7.3. |
| Purification Method | Antigen Affinity Purified |
| Isotype | IgG |
| Clonality | Polyclonal |
| Alias | Glutamate dehydrogenase 2, mitochondrial (GDH 2) (EC 1.4.1.3), GLUD2, GLUDP1 |
| Immunogen Species | Homo sapiens (Human) |
| Research Area | Signal Transduction |
| Target Names | GLUD2 |

Image



Western blot

All lanes: Glutamate dehydrogenase 2, mitochondrial antibody at 4μg/ml

Lane 1: Mouse brain tissue

Lane 2: 293T whole cell lysate

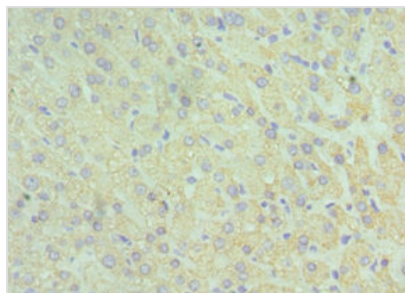
Lane 3: Rat brain tissue

Secondary

Goat polyclonal to rabbit IgG at 1/10000 dilution

Predicted band size: 61 kDa

Observed band size: 61 kDa



Immunohistochemistry of paraffin-embedded human liver tissue using CSB-PA009545ESR2HU at dilution of 1:100