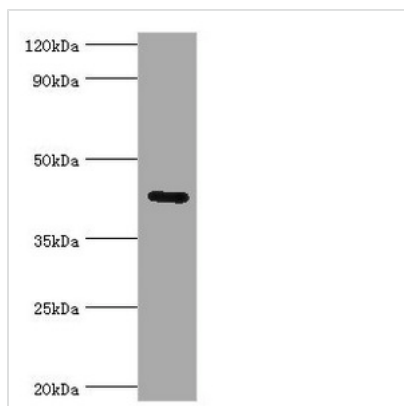




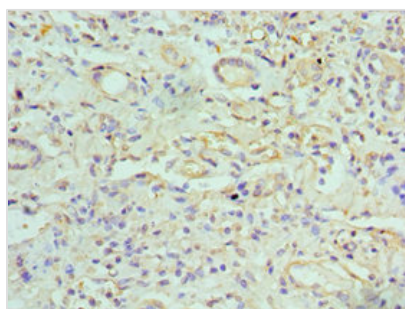
# GJC1 Antibody

<b>Product Code</b>	CSB-PA009458ESR2HU
<b>Storage</b>	Upon receipt, store at -20°C or -80°C. Avoid repeated freeze.
<b>Uniprot No.</b>	P36383
<b>Immunogen</b>	Recombinant Human Gap junction gamma-1 protein (247-396AA)
<b>Raised In</b>	Rabbit
<b>Species Reactivity</b>	Human
<b>Tested Applications</b>	ELISA, WB, IHC, IF; Recommended dilution: WB:1:1000-1:5000, IHC:1:20-1:200, IF:1:50-1:200
<b>Form</b>	Liquid
<b>Conjugate</b>	Non-conjugated
<b>Storage Buffer</b>	PBS with 0.02% sodium azide, 50% glycerol, pH7.3.
<b>Purification Method</b>	Antigen Affinity Purified
<b>Isotype</b>	IgG
<b>Clonality</b>	Polyclonal
<b>Alias</b>	Connexin-45,Cx45,Gap junction alpha-7 protein,GJC1,GJA7
<b>Immunogen Species</b>	Homo sapiens (Human)
<b>Research Area</b>	Cardiovascular; Signal transduction
<b>Target Names</b>	GJC1

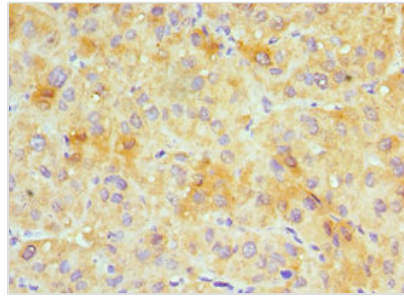
## Image



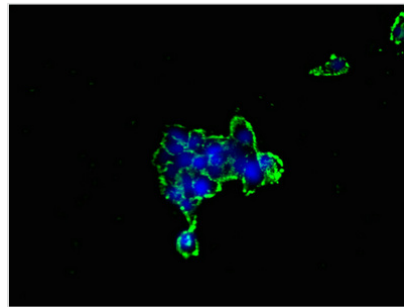
Western blot  
 All lanes: Gap junction gamma-1 protein antibody at 6µg/ml + 293T whole cell lysate  
 Secondary  
 Goat polyclonal to rabbit IgG at 1/10000 dilution  
 Predicted band size: 45 kDa  
 Observed band size: 45 kDa



Immunohistochemistry of paraffin-embedded human kidney tissue using CSB-PA009458ESR2HU at dilution of 1:100



Immunohistochemistry of paraffin-embedded human liver cancer using CSB-PA009458ESR2HU at dilution of 1:100



Immunofluorescent analysis of 293 cells using CSB-PA009458ESR2HU at dilution of 1:100 and Alexa Fluor 488-conjugated AffiniPure Goat Anti-Rabbit IgG(H+L)

## Usage

For Research Use Only. Not for use in diagnostic or therapeutic procedures.