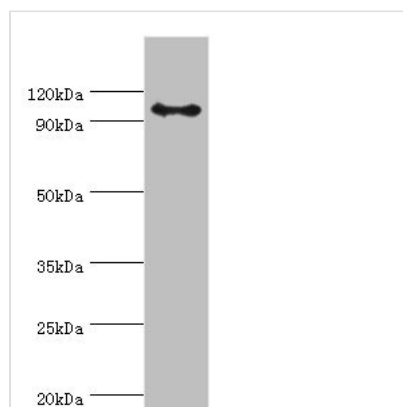




AP2B1 Antibody

Product Code	CSB-PA001871ESR1HU
Storage	Upon receipt, store at -20°C or -80°C. Avoid repeated freeze.
Uniprot No.	P63010
Immunogen	Recombinant Human AP-2 complex subunit beta protein (738-937AA)
Raised In	Rabbit
Species Reactivity	Human, Mouse
Tested Applications	ELISA, WB, IHC; Recommended dilution: WB:1:200-1:1000, IHC:1:20-1:200
Form	Liquid
Conjugate	Non-conjugated
Storage Buffer	PBS with 0.02% sodium azide, 50% glycerol, pH7.3.
Purification Method	Antigen Affinity Purified
Isotype	IgG
Clonality	Polyclonal
Alias	AP-2 complex subunit beta (AP105B) (Adaptor protein complex AP-2 subunit beta) (Adaptor-related protein complex 2 subunit beta) (Beta-2-adaptin) (Beta-adaptin) (Clathrin assembly protein complex 2 beta large chain) (Plasma membrane adaptor HA2/AP2 adaptin beta subunit), AP2B1, ADTB2 CLAPB1
Immunogen Species	Homo sapiens (Human)
Research Area	Signal Transduction
Target Names	AP2B1

Image



Western blot

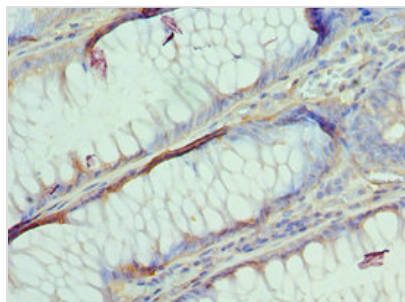
All lanes: AP-2 complex subunit beta antibody at 8μg/ml + Mouse brain tissue

Secondary

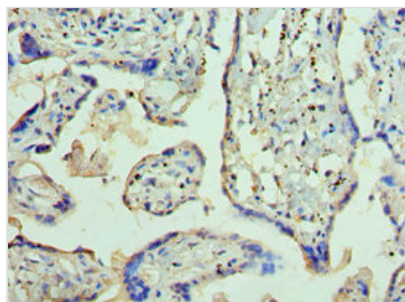
Goat polyclonal to rabbit IgG at 1/10000 dilution

Predicted band size: 105, 106, 99 kDa

Observed band size: 105 kDa



Immunohistochemistry of paraffin-embedded human colon cancer using CSB-PA001871ESR1HU at dilution of 1:100



Immunohistochemistry of paraffin-embedded human placenta tissue using CSB-PA001871ESR1HU at dilution of 1:100