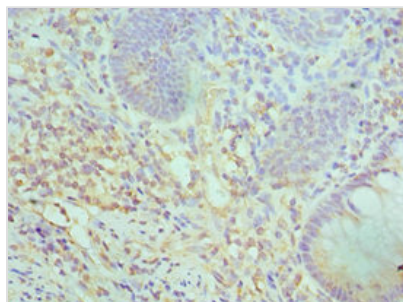




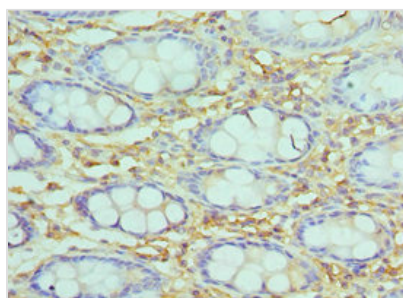
SMARCC2 Antibody

Product Code	CSB-PA851527ESR2HU
Storage	Upon receipt, store at -20°C or -80°C. Avoid repeated freeze.
Uniprot No.	Q8TAQ2
Immunogen	Recombinant Human SWI/SNF complex subunit SMARCC2 protein (300-650AA)
Raised In	Rabbit
Species Reactivity	Human
Tested Applications	ELISA, IHC, ChIP; Recommended dilution: IHC:1:20-1:200
Form	Liquid
Conjugate	Non-conjugated
Storage Buffer	PBS with 0.02% sodium azide, 50% glycerol, pH7.3.
Purification Method	Antigen Affinity Purified
Isotype	IgG
Clonality	Polyclonal
Alias	SWI/SNF complex subunit SMARCC2 (BRG1-associated factor 170) (BAF170) (SWI/SNF complex 170 kDa subunit) (SWI/SNF-related matrix-associated actin-dependent regulator of chromatin subfamily C member 2), SMARCC2, BAF170
Immunogen Species	Homo sapiens (Human)
Research Area	Epigenetics and Nuclear Signaling
Target Names	SMARCC2

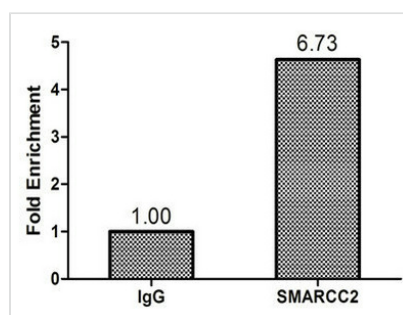
Image



Immunohistochemistry of paraffin-embedded human colon cancer using CSB-PA851527ESR2HU at dilution of 1:100



Immunohistochemistry of paraffin-embedded human epityphlon tissue using CSB-PA851527ESR2HU at dilution of 1:100



Chromatin Immunoprecipitation Hela (1.1×10^6) were cross-linked with formaldehyde, sonicated, and immunoprecipitated with $4\mu\text{g}$ anti-SMARCC2 or a control normal rabbit IgG. The resulting ChIP DNA was quantified using real-time PCR with primers (CSB-PP851527HU) against the ESR1 pS2 promoter.