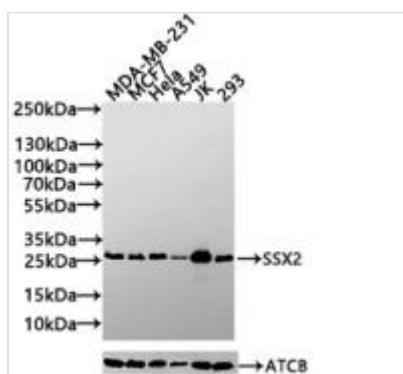




SSX2 Antibody

Product Code	CSB-PA613674ESR2HU
Storage	Upon receipt, store at -20°C or -80°C. Avoid repeated freeze.
Uniprot No.	Q16385
Immunogen	Synthesized peptide derived from human SSX2 AA range
Raised In	Rabbit
Species Reactivity	Human
Tested Applications	ELISA, WB; Recommended dilution: WB:1:500-1:2000
Form	Liquid
Storage Buffer	Liquid in PBS containing 50% glycerol, 0.5% BSA and 0.02% sodium azide.
Purification Method	Antigen Affinity Purified
Isotype	IgG
Clonality	Polyclonal
Product Type	Polyclonal Antibody
Immunogen Species	Homo sapiens (Human)
Research Area	Epigenetics and Nuclear Signaling
Target Names	SSX2

Image



Western Blot

Positive WB detected in: MDA-MB-231 whole cell lysate(30µg), MCF7 whole cell lysate(30µg), HeLa whole cell lysate(30µg), A549 whole cell lysate(30µg), JK whole cell lysate(30µg), 293 whole cell lysate(30µg)

All lanes: SSX2 antibody at 1:1000

Secondary

Goat polyclonal to rabbit IgG at 1/20000 dilution

Predicted band size: 22,26 kDa

Observed band size: 26 kDa

Exposure time: 60s

Usage

For Research Use Only. Not for use in diagnostic or therapeutic procedures.