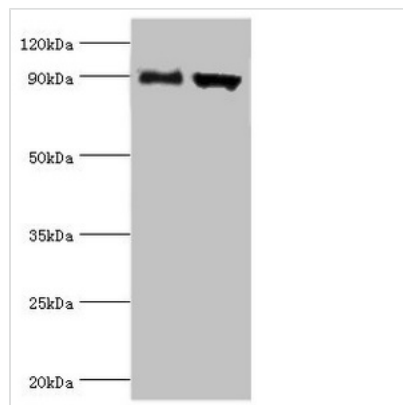




# ADAM9 Antibody

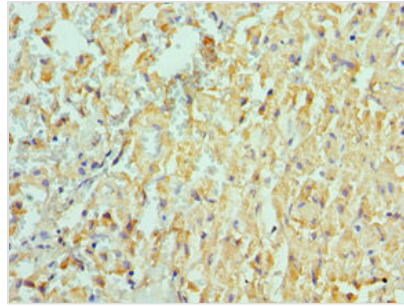
<b>Product Code</b>	CSB-PA618774ESR1HU
<b>Storage</b>	Upon receipt, store at -20°C or -80°C. Avoid repeated freeze.
<b>Uniprot No.</b>	Q13443
<b>Immunogen</b>	Recombinant Human Disintegrin and metalloproteinase domain-containing protein 9 protein (475-685AA)
<b>Raised In</b>	Rabbit
<b>Species Reactivity</b>	Human, Mouse
<b>Tested Applications</b>	ELISA, WB, IHC; Recommended dilution: WB:1:500-1:2000, IHC:1:20-1:200
<b>Form</b>	Liquid
<b>Conjugate</b>	Non-conjugated
<b>Storage Buffer</b>	PBS with 0.02% sodium azide, 50% glycerol, pH7.3.
<b>Purification Method</b>	Antigen Affinity Purified
<b>Isotype</b>	IgG
<b>Clonality</b>	Polyclonal
<b>Alias</b>	Disintegrin and metalloproteinase domain-containing protein 9 (ADAM 9) (EC 3.4.24.-) (Cellular disintegrin-related protein) (Meltrin-gamma) (Metalloprotease/disintegrin/cysteine-rich protein 9) (Myeloma cell metalloproteinase), ADAM9, KIAA0021 MCMP MDC9 MLTNG
<b>Immunogen Species</b>	Homo sapiens (Human)
<b>Research Area</b>	Signal Transduction
<b>Target Names</b>	ADAM9

## Image

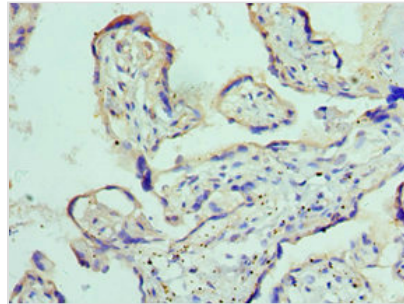


### Western blot

All lanes: Disintegrin and metalloproteinase domain-containing protein 9 antibody at 2µg/ml  
 Lane 1: Mouse liver tissue  
 Lane 2: Mouse heart tissue  
 Secondary  
 Goat polyclonal to rabbit IgG at 1/10000 dilution  
 Predicted band size: 91, 73 kDa  
 Observed band size: 91 kDa



Immunohistochemistry of paraffin-embedded human liver cancer using CSB-PA618774ESR1HU at dilution of 1:100



Immunohistochemistry of paraffin-embedded human placenta tissue using CSB-PA618774ESR1HU at dilution of 1:100

## Usage

For Research Use Only. Not for use in diagnostic or therapeutic procedures.