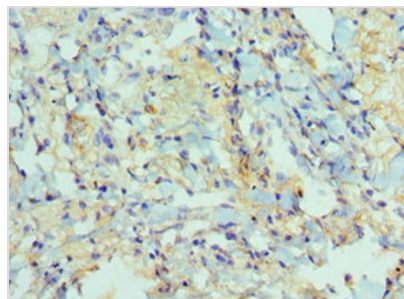




# ADAM9 Antibody

|                            |   |
|----------------------------|---|
| <b>Product Code</b>        | CSB-PA618774ESR2HU  |
| <b>Storage</b>             | Upon receipt, store at -20°C or -80°C. Avoid repeated freeze.   |
| <b>Uniprot No.</b>         | Q13443  |
| <b>Immunogen</b>           | Recombinant Human Disintegrin and metalloproteinase domain-containing protein 9 protein (475-685AA)   |
| <b>Raised In</b>           | Rabbit  |
| <b>Species Reactivity</b>  | Human   |
| <b>Tested Applications</b> | ELISA, IHC; Recommended dilution: IHC:1:20-1:200  |
| <b>Form</b>                | Liquid  |
| <b>Conjugate</b>           | Non-conjugated  |
| <b>Storage Buffer</b>      | PBS with 0.02% sodium azide, 50% glycerol, pH7.3.   |
| <b>Purification Method</b> | Antigen Affinity Purified   |
| <b>Isotype</b>             | IgG   |
| <b>Clonality</b>           | Polyclonal  |
| <b>Alias</b>               | Disintegrin and metalloproteinase domain-containing protein 9 (ADAM 9) (EC 3.4.24.-) (Cellular disintegrin-related protein) (Meltrin-gamma) (Metalloprotease/disintegrin/cysteine-rich protein 9) (Myeloma cell metalloproteinase), ADAM9, KIAA0021 MCMP MDC9 MLTNG |
| <b>Immunogen Species</b>   | Homo sapiens (Human)  |
| <b>Research Area</b>       | Signal Transduction   |
| <b>Target Names</b>        | ADAM9   |

## Image



Immunohistochemistry of paraffin-embedded human lung cancer using CSB-PA618774ESR2HU at dilution of 1:100

## Usage

For Research Use Only. Not for use in diagnostic or therapeutic procedures.