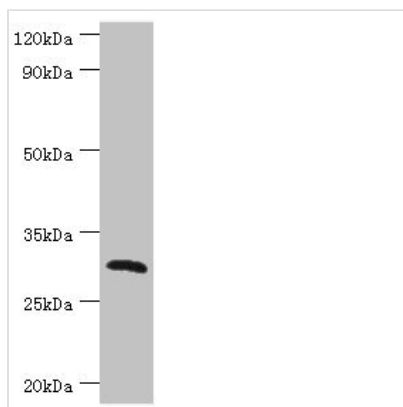




CLEC12A Antibody

Product Code	CSB-PA725176ESR1HU
Storage	Upon receipt, store at -20°C or -80°C. Avoid repeated freeze.
Uniprot No.	Q5QGZ9
Immunogen	Recombinant Human C-type lectin domain family 12 member A protein (66-265AA)
Raised In	Rabbit
Species Reactivity	Human, Mouse
Tested Applications	ELISA, WB, IHC; Recommended dilution: WB:1:500-1:2000, IHC:1:20-1:200
Form	Liquid
Conjugate	Non-conjugated
Storage Buffer	PBS with 0.02% sodium azide, 50% glycerol, pH7.3.
Purification Method	Antigen Affinity Purified
Isotype	IgG
Clonality	Polyclonal
Alias	C-type lectin domain family 12 member A (C-type lectin-like molecule 1) (CLL-1) (Dendritic cell-associated lectin 2) (DCAL-2) (Myeloid inhibitory C-type lectin-like receptor) (MICL), CLEC12A, CLL1 DCAL2 MICL
Immunogen Species	Homo sapiens (Human)
Research Area	Signal Transduction
Target Names	CLEC12A

Image



Western blot

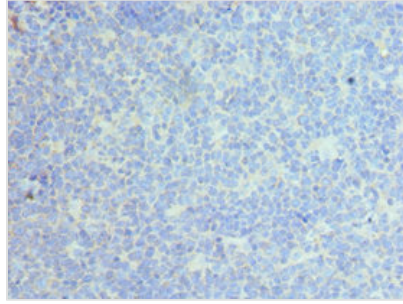
All lanes: C-type lectin domain family 12 member A antibody at 2µg/ml + Mouse skeletal muscle tissue

Secondary

Goat polyclonal to rabbit IgG at 1/10000 dilution

Predicted band size: 31, 33, 9, 28, 25 kDa

Observed band size: 31 kDa



Immunohistochemistry of paraffin-embedded human tonsil tissue using CSB-PA725176ESR1HU at dilution of 1:100

Usage

For Research Use Only. Not for use in diagnostic or therapeutic procedures.