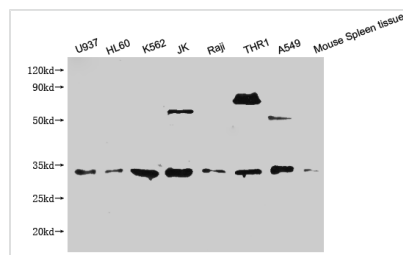




# CLEC12A Antibody

<b>Product Code</b>	CSB-PA725176ESR2HU
<b>Storage</b>	Upon receipt, store at -20°C or -80°C. Avoid repeated freeze.
<b>Uniprot No.</b>	Q5QGZ9
<b>Immunogen</b>	Recombinant Human C-type lectin domain family 12 member A protein (66-265AA)
<b>Raised In</b>	Rabbit
<b>Species Reactivity</b>	Human, Mouse
<b>Tested Applications</b>	ELISA, WB, IF; Recommended dilution: WB:1:2000-1:5000, IF:1:20-1:200
<b>Form</b>	Liquid
<b>Conjugate</b>	Non-conjugated
<b>Storage Buffer</b>	PBS with 0.02% sodium azide, 50% glycerol, pH7.3.
<b>Purification Method</b>	Antigen Affinity Purified
<b>Isotype</b>	IgG
<b>Clonality</b>	Polyclonal
<b>Product Type</b>	Polyclonal Antibody
<b>Immunogen Species</b>	Homo sapiens (Human)
<b>Research Area</b>	Signal Transduction
<b>Target Names</b>	CLEC12A

## Image



### Western Blot

Positive WB detected in: U937 whole cell lysate, HL60 whole cell lysate, K562 whole cell lysate, JK whole cell lysate, Raji whole cell lysate, THP1 whole cell lysate, A549 whole cell lysate, Mouse spleen tissue

All lanes: CLEC12A antibody at 1:2000

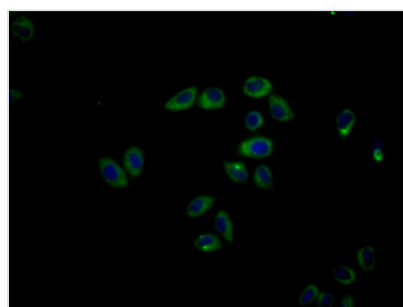
### Secondary

Goat polyclonal to rabbit IgG at 1/50000 dilution

Predicted band size: 32 KDa

Observed band size: 32 KDa

Exposure time?1min



Immunofluorescence staining of HeLa cells with CSB-PA725176ESR2HU at 1:100, counter-stained with DAPI. The cells were fixed in 4% formaldehyde, permeabilized using 0.2% Triton X-100 and blocked in 10% normal Goat Serum. The cells were then incubated with the antibody overnight at 4°C. The secondary antibody was Alexa Fluor 488-conjugated AffiniPure Goat Anti-Rabbit IgG(H+L).