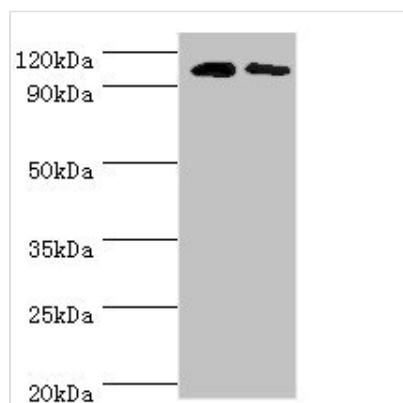




# ALDH1L1 Antibody

<b>Product Code</b>	CSB-PA001569ESR1HU
<b>Storage</b>	Upon receipt, store at -20°C or -80°C. Avoid repeated freeze.
<b>Uniprot No.</b>	O75891
<b>Immunogen</b>	Recombinant Human Cytosolic 10-formyltetrahydrofolate dehydrogenase protein (1-250AA)
<b>Raised In</b>	Rabbit
<b>Species Reactivity</b>	Human, Mouse
<b>Tested Applications</b>	ELISA, WB, IHC; Recommended dilution: WB:1:500-1:5000, IHC:1:20-1:200
<b>Form</b>	Liquid
<b>Conjugate</b>	Non-conjugated
<b>Storage Buffer</b>	PBS with 0.02% sodium azide, 50% glycerol, pH7.3.
<b>Purification Method</b>	Antigen Affinity Purified
<b>Isotype</b>	IgG
<b>Clonality</b>	Polyclonal
<b>Alias</b>	Cytosolic 10-formyltetrahydrofolate dehydrogenase (10-FTHFDH) (FDH) (EC 1.5.1.6) (Aldehyde dehydrogenase family 1 member L1), ALDH1L1, FTHFD
<b>Immunogen Species</b>	Homo sapiens (Human)
<b>Research Area</b>	Neuroscience
<b>Target Names</b>	ALDH1L1

## Image



### Western blot

All lanes: Cytosolic 10-formyltetrahydrofolate dehydrogenase antibody at 8µg/ml

Lane 1: Mouse liver tissue

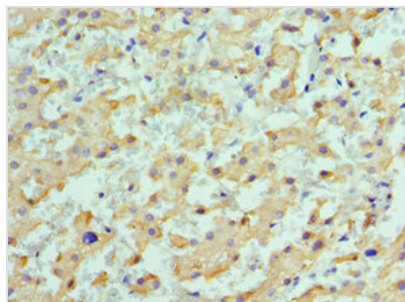
Lane 2: Mouse gonad tissue

Secondary

Goat polyclonal to rabbit IgG at 1/10000 dilution

Predicted band size: 99, 88, 100, 56 kDa

Observed band size: 99 kDa



Immunohistochemistry of paraffin-embedded human liver cancer using CSB-PA001569ESR1HU at dilution of 1:100

---

**Usage**

For Research Use Only. Not for use in diagnostic or therapeutic procedures.