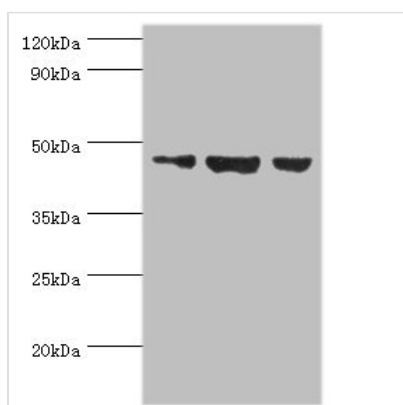




ACTL6B Antibody

Product Code	CSB-PA001237ESR2HU
Storage	Upon receipt, store at -20°C or -80°C. Avoid repeated freeze.
Uniprot No.	O94805
Immunogen	Recombinant Human Actin-like protein 6B protein (1-280AA)
Raised In	Rabbit
Species Reactivity	Human
Tested Applications	ELISA, WB, IHC; Recommended dilution: WB:1:200-1:1000, IHC:1:20-1:200
Form	Liquid
Conjugate	Non-conjugated
Storage Buffer	PBS with 0.02% sodium azide, 50% glycerol, pH7.3.
Purification Method	Antigen Affinity Purified
Isotype	IgG
Clonality	Polyclonal
Alias	Actin-like protein 6B (53 kDa BRG1-associated factor B) (Actin-related protein Baf53b) (ArpNalpha) (BRG1-associated factor 53B) (BAF53B), ACTL6B, ACTL6 BAF53B
Immunogen Species	Homo sapiens (Human)
Research Area	Neuroscience
Target Names	ACTL6B

Image



Western blot

All lanes: Actin-like protein 6B antibody at 3µg/ml

Lane 1: HeLa whole cell lysate

Lane 2: U251 whole cell lysate

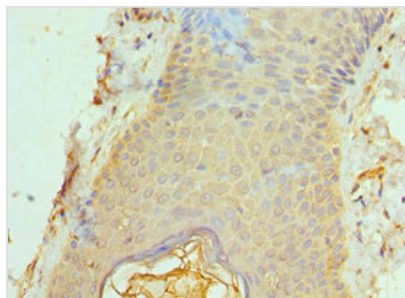
Lane 3: HepG2 whole cell lysate

Secondary

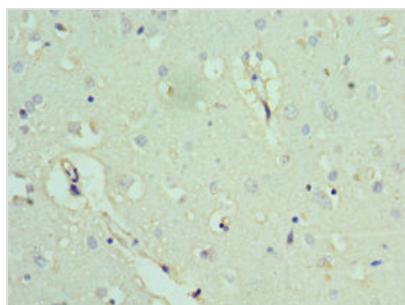
Goat polyclonal to rabbit IgG at 1/10000 dilution

Predicted band size: 47 kDa

Observed band size: 47 kDa



Immunohistochemistry of paraffin-embedded human skin tissue using CSB-PA001237ESR2HU at dilution of 1:100



Immunohistochemistry of paraffin-embedded human brain tissue using CSB-PA001237ESR2HU at dilution of 1:100

Usage

For Research Use Only. Not for use in diagnostic or therapeutic procedures.