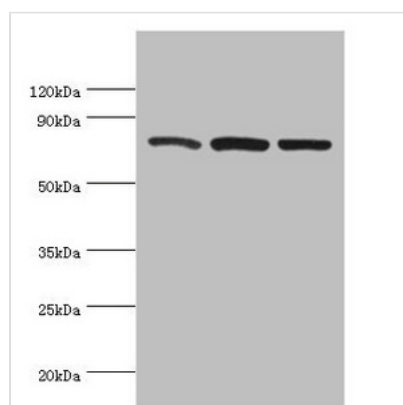




# CAPN1 Antibody

<b>Product Code</b>	CSB-PA004490ESR2HU
<b>Storage</b>	Upon receipt, store at -20°C or -80°C. Avoid repeated freeze.
<b>Uniprot No.</b>	P07384
<b>Immunogen</b>	Recombinant Human Calpain-1 catalytic subunit protein (20-330AA)
<b>Raised In</b>	Rabbit
<b>Species Reactivity</b>	Human
<b>Tested Applications</b>	ELISA, WB, IHC; Recommended dilution: WB:1:200-1:1000, IHC:1:20-1:200
<b>Form</b>	Liquid
<b>Conjugate</b>	Non-conjugated
<b>Storage Buffer</b>	PBS with 0.02% sodium azide, 50% glycerol, pH7.3.
<b>Purification Method</b>	Antigen Affinity Purified
<b>Isotype</b>	IgG
<b>Clonality</b>	Polyclonal
<b>Alias</b>	Calpain-1 catalytic subunit (EC 3.4.22.52) (Calcium-activated neutral proteinase 1) (CANP 1) (Calpain mu-type) (Calpain-1 large subunit) (Cell proliferation-inducing gene 30 protein) (Micromolar-calpain) (muCANP), CAPN1, CANPL1
<b>Immunogen Species</b>	Homo sapiens (Human)
<b>Research Area</b>	Signal Transduction
<b>Target Names</b>	CAPN1

## Image



Western blot

All lanes: Calpain-1 catalytic subunit antibody at 2µg/ml

Lane 1: A431 whole cell lysate

Lane 2: HeLa whole cell lysate

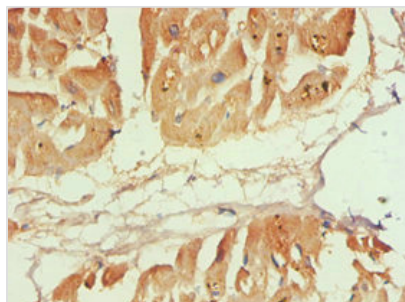
Lane 3: Jurkat whole cell lysate

Secondary

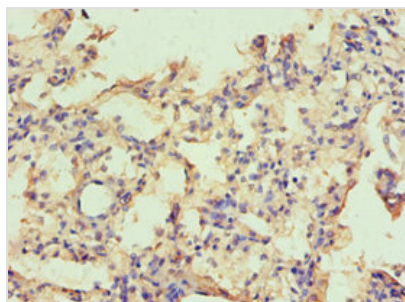
Goat polyclonal to rabbit IgG at 1/10000 dilution

Predicted band size: 82 kDa

Observed band size: 82 kDa



Immunohistochemistry of paraffin-embedded human heart tissue using CSB-PA004490ESR2HU at dilution of 1:100



Immunohistochemistry of paraffin-embedded human lung tissue using CSB-PA004490ESR2HU at dilution of 1:100

## Usage

For Research Use Only. Not for use in diagnostic or therapeutic procedures.