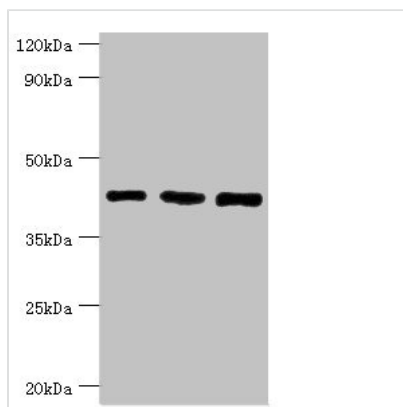




SMARCB1 Antibody

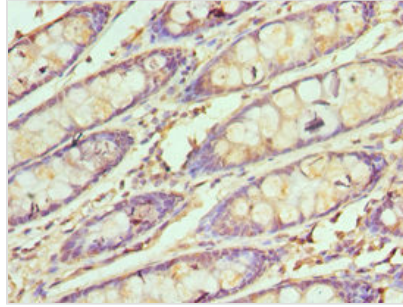
Product Code	CSB-PA623654ESR2HU
Storage	Upon receipt, store at -20°C or -80°C. Avoid repeated freeze.
Uniprot No.	Q12824
Immunogen	Recombinant Human SWI/SNF-related matrix-associated actin-dependent regulator of chromatin subfamily B member 1 protein (86-385AA)
Raised In	Rabbit
Species Reactivity	Human, Mouse
Tested Applications	ELISA, WB, IHC; Recommended dilution: WB:1:500-1:2000, IHC:1:20-1:200
Form	Liquid
Conjugate	Non-conjugated
Storage Buffer	PBS with 0.02% sodium azide, 50% glycerol, pH7.3.
Purification Method	Antigen Affinity Purified
Isotype	IgG
Clonality	Polyclonal
Alias	SWI/SNF-related matrix-associated actin-dependent regulator of chromatin subfamily B member 1 (BRG1-associated factor 47) (BAF47) (Integrase interactor 1 protein) (SNF5 homolog) (hSNF5), SMARCB1, BAF47 INI1 SNF5L1
Immunogen Species	Homo sapiens (Human)
Research Area	Epigenetics and Nuclear Signaling
Target Names	SMARCB1

Image

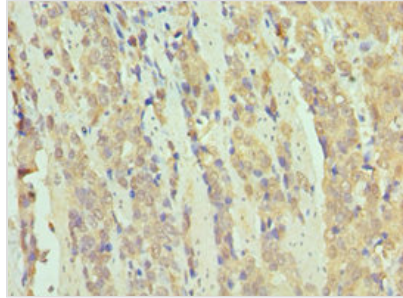


Western blot

All lanes: SWI/SNF-related matrix-associated actin-dependent regulator of chromatin subfamily B member 1 antibody at 8µg/ml
 Lane 1: HeLa whole cell lysate
 Lane 2: 293T whole cell lysate
 Lane 3: Mouse stomach tissue
 Secondary
 Goat polyclonal to rabbit IgG at 1/10000 dilution
 Predicted band size: 45, 44 kDa
 Observed band size: 45 kDa



Immunohistochemistry of paraffin-embedded human colon tissue using CSB-PA623654ESR2HU at dilution of 1:100



Immunohistochemistry of paraffin-embedded human colon cancer using CSB-PA623654ESR2HU at dilution of 1:100

Usage

For Research Use Only. Not for use in diagnostic or therapeutic procedures.