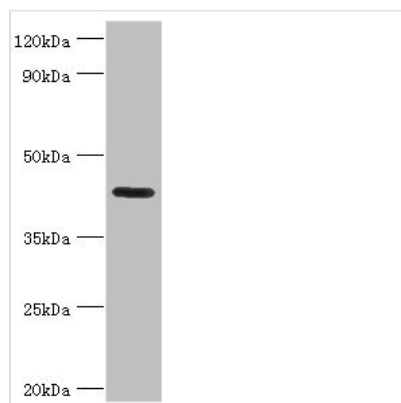




# NPRL2 Antibody

<b>Product Code</b>	CSB-PA840976ESR1HU
<b>Storage</b>	Upon receipt, store at -20°C or -80°C. Avoid repeated freeze.
<b>Uniprot No.</b>	Q8WTW4
<b>Immunogen</b>	Recombinant Human Nitrogen permease regulator 2-like protein (1-220AA)
<b>Raised In</b>	Rabbit
<b>Species Reactivity</b>	Human, Mouse
<b>Tested Applications</b>	ELISA, WB, IHC; Recommended dilution: WB:1:500-1:2000, IHC:1:20-1:200
<b>Form</b>	Liquid
<b>Conjugate</b>	Non-conjugated
<b>Storage Buffer</b>	PBS with 0.02% sodium azide, 50% glycerol, pH7.3.
<b>Purification Method</b>	Antigen Affinity Purified
<b>Isotype</b>	IgG
<b>Clonality</b>	Polyclonal
<b>Alias</b>	GATOR complex protein NPRL2 (Gene 21 protein) (G21 protein) (Nitrogen permease regulator 2-like protein) (NPR2-like protein) (Tumor suppressor candidate 4), NPRL2, TUSC4
<b>Immunogen Species</b>	Homo sapiens (Human)
<b>Research Area</b>	Epigenetics and Nuclear Signaling
<b>Target Names</b>	NPRL2

## Image



Western blot

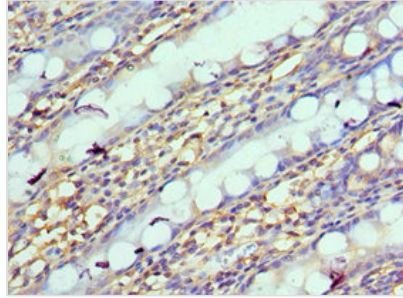
All lanes: Nitrogen permease regulator 2-like protein antibody at 7µg/ml + Mouse skeletal muscle tissue

Secondary

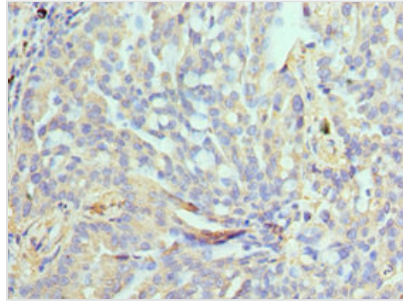
Goat polyclonal to rabbit IgG at 1/10000 dilution

Predicted band size: 44, 24 kDa

Observed band size: 44 kDa



Immunohistochemistry of paraffin-embedded human colon tissue using CSB-PA840976ESR1HU at dilution of 1:100



Immunohistochemistry of paraffin-embedded human lung cancer using CSB-PA840976ESR1HU at dilution of 1:100

## Usage

For Research Use Only. Not for use in diagnostic or therapeutic procedures.