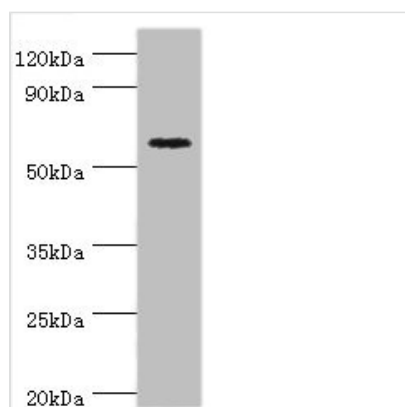




CRY2 Antibody

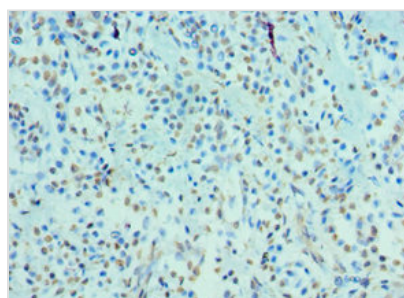
Product Code	CSB-PA673229ESR2HU
Storage	Upon receipt, store at -20°C or -80°C. Avoid repeated freeze.
Uniprot No.	Q49AN0
Immunogen	Recombinant Human Cryptochrome-2 protein (434-593AA)
Raised In	Rabbit
Species Reactivity	Human
Tested Applications	ELISA, WB, IHC; Recommended dilution: WB:1:200-1:1000, IHC:1:20-1:200
Form	Liquid
Conjugate	Non-conjugated
Storage Buffer	PBS with 0.02% sodium azide, 50% glycerol, pH7.3.
Purification Method	Antigen Affinity Purified
Isotype	IgG
Clonality	Polyclonal
Alias	Cryptochrome-2, CRY2, KIAA0658
Immunogen Species	Homo sapiens (Human)
Research Area	Neuroscience
Target Names	CRY2

Image



Western blot

All lanes: Cryptochrome-2 antibody at 14µg/ml + HepG2 whole cell lysate
 Secondary
 Goat polyclonal to rabbit IgG at 1/10000 dilution
 Predicted band size: 67, 61 kDa
 Observed band size: 67 kDa



Immunohistochemistry of paraffin-embedded human breast cancer using CSB-PA673229ESR2HU at dilution of 1:100



Usage

For Research Use Only. Not for use in diagnostic or therapeutic procedures.