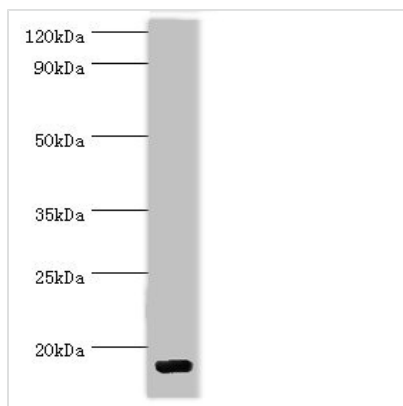




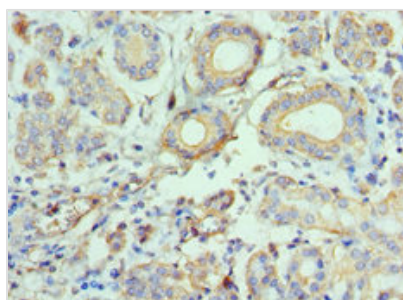
CCL28 Antibody

Product Code	CSB-PA868302ESR1HU
Storage	Upon receipt, store at -20°C or -80°C. Avoid repeated freeze.
Uniprot No.	Q9NRJ3
Immunogen	Recombinant Human C-C motif chemokine 28 protein (20-127AA)
Raised In	Rabbit
Species Reactivity	Human, Mouse
Tested Applications	ELISA, WB, IHC; Recommended dilution: WB:1:500-1:2000, IHC:1:20-1:200
Form	Liquid
Conjugate	Non-conjugated
Storage Buffer	PBS with 0.02% sodium azide, 50% glycerol, pH7.3.
Purification Method	Antigen Affinity Purified
Isotype	IgG
Clonality	Polyclonal
Alias	C-C motif chemokine 28 (Mucosae-associated epithelial chemokine) (MEC) (Protein CCK1) (Small-inducible cytokine A28), CCL28, SCYA28
Immunogen Species	Homo sapiens (Human)
Research Area	Immunology
Target Names	CCL28

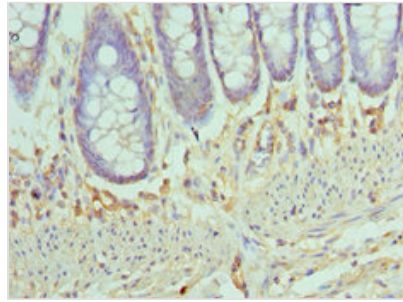
Image



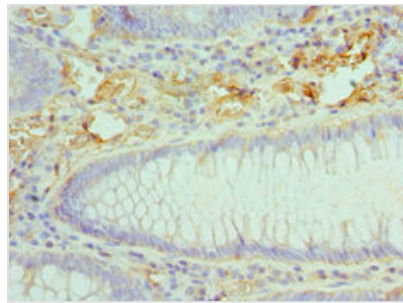
Western blot
 All lanes: C-C motif chemokine 28 antibody at 5µg/ml + Mouse spleen tissue
 Secondary
 Goat polyclonal to rabbit IgG at 1/10000 dilution
 Predicted band size: 15, 13 kDa
 Observed band size: 15 kDa



Immunohistochemistry of paraffin-embedded human salivary gland tissue using CSB-PA868302ESR1HU at dilution of 1:100



Immunohistochemistry of paraffin-embedded human colon tissue using CSB-PA868302ESR1HU at dilution of 1:100



Immunohistochemistry of paraffin-embedded human colon cancer using CSB-PA868302ESR1HU at dilution of 1:100

Usage

For Research Use Only. Not for use in diagnostic or therapeutic procedures.