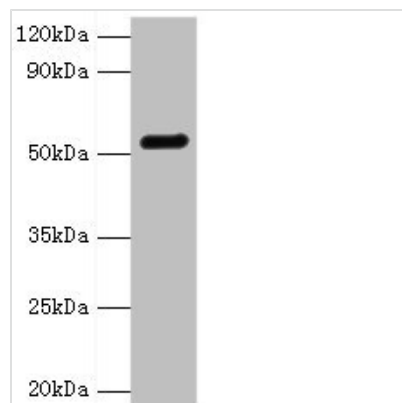




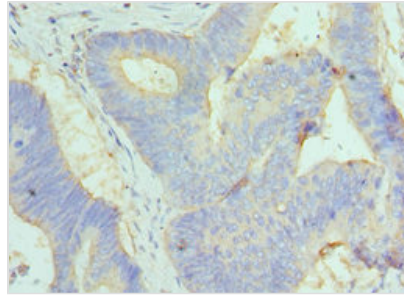
# GC Antibody

<b>Product Code</b>	CSB-PA009306ESR1HU
<b>Storage</b>	Upon receipt, store at -20°C or -80°C. Avoid repeated freeze.
<b>Uniprot No.</b>	P02774
<b>Immunogen</b>	Recombinant Human Vitamin D-binding protein (305-474AA)
<b>Raised In</b>	Rabbit
<b>Species Reactivity</b>	Human, Mouse
<b>Tested Applications</b>	ELISA, WB, IHC; Recommended dilution: WB:1:500-1:2000, IHC:1:20-1:200
<b>Relevance</b>	Multifunctional protein found in plasma, ascitic fluid, cerebrospinal fluid, and urine and on the surface of many cell types. In plasma, it carries the vitamin D sterols and prevents polymerization of actin by binding its monomers. DBP associates with membrane-bound immunoglobulin on the surface of B-lymphocytes and with IgG Fc receptor on the membranes of T-lymphocytes.
<b>Form</b>	Liquid
<b>Conjugate</b>	Non-conjugated
<b>Storage Buffer</b>	PBS with 0.02% sodium azide, 50% glycerol, pH7.3.
<b>Purification Method</b>	Antigen Affinity Purified
<b>Isotype</b>	IgG
<b>Clonality</b>	Polyclonal
<b>Alias</b>	Vitamin D-binding protein (DBP) (VDB) (Gc protein-derived macrophage activating factor) (Gc-MAF) (GcMAF) (Gc-globulin) (Group-specific component) (Gc) (Vitamin D-binding protein-macrophage activating factor) (DBP-maf), GC
<b>Species</b>	Human
<b>Research Area</b>	Signal Transduction
<b>Target Names</b>	GC

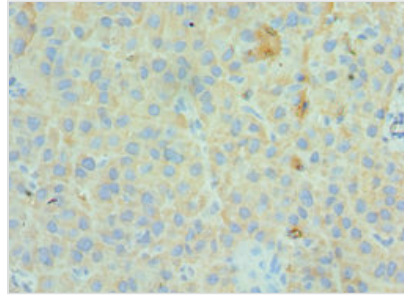
## Image



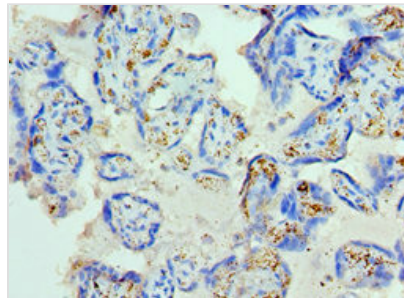
Western blot  
 All lanes: GC antibody at 2µg/ml + Mouse liver tissue  
 Secondary  
 Goat polyclonal to rabbit IgG at 1/10000 dilution  
 Predicted band size: 53, 40, 56 kDa  
 Observed band size: 53 kDa



Immunohistochemistry of paraffin-embedded human colon cancer using CSB-PA009306ESR1HU at dilution of 1:100



Immunohistochemistry of paraffin-embedded human liver cancer using CSB-PA009306ESR1HU at dilution of 1:100



Immunohistochemistry of paraffin-embedded human placenta tissue using CSB-PA009306ESR1HU at dilution of 1:100