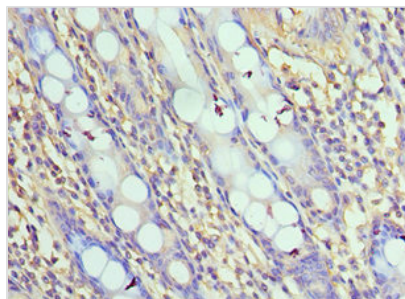




# NLRC4 Antibody

<b>Product Code</b>	CSB-PA873615ESR1HU
<b>Storage</b>	Upon receipt, store at -20°C or -80°C. Avoid repeated freeze.
<b>Uniprot No.</b>	Q9NPP4
<b>Immunogen</b>	Recombinant Human NLR family CARD domain-containing protein 4 protein (1-250AA)
<b>Raised In</b>	Rabbit
<b>Species Reactivity</b>	Human
<b>Tested Applications</b>	ELISA, IHC; Recommended dilution: IHC:1:20-1:200
<b>Form</b>	Liquid
<b>Conjugate</b>	Non-conjugated
<b>Storage Buffer</b>	PBS with 0.02% sodium azide, 50% glycerol, pH7.3.
<b>Purification Method</b>	Antigen Affinity purified
<b>Isotype</b>	IgG
<b>Clonality</b>	Polyclonal
<b>Alias</b>	NLR family CARD domain-containing protein 4 (CARD, LRR, and NACHT-containing protein) (Clan protein) (Caspase recruitment domain-containing protein 12) (Ice protease-activating factor) (Ipaf), NLRC4, CARD12 CLAN CLAN1 IPAF
<b>Immunogen Species</b>	Homo sapiens (Human)
<b>Research Area</b>	Immunology
<b>Target Names</b>	NLRC4

## Image



Immunohistochemistry of paraffin-embedded human colon tissue using CSB-PA873615ESR1HU at dilution of 1:100

## Usage

For Research Use Only. Not for use in diagnostic or therapeutic procedures.