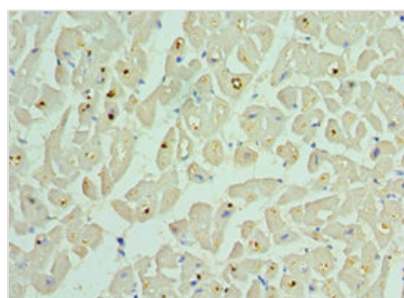




BCL2L13 Antibody

Product Code	CSB-PA861162DSR1HU
Storage	Upon receipt, store at -20°C or -80°C. Avoid repeated freeze.
Uniprot No.	Q9BXK5
Immunogen	Recombinant Human Bcl-2-like protein 13 protein (1-300AA)
Raised In	Rabbit
Species Reactivity	Human
Tested Applications	ELISA, IHC; Recommended dilution: IHC:1:20-1:200
Form	Liquid
Conjugate	Non-conjugated
Storage Buffer	PBS with 0.02% sodium azide, 50% glycerol, pH7.3.
Purification Method	Antigen Affinity Purified
Isotype	IgG
Clonality	Polyclonal
Alias	Bcl-2-like protein 13 (Bcl2-L-13) (Bcl-rambo) (Protein Mil1), BCL2L13, MIL1
Immunogen Species	Homo sapiens (Human)
Research Area	Cell Biology
Target Names	BCL2L13

Image



Immunohistochemistry of paraffin-embedded human heart tissue using CSB-PA861162DSR1HU at dilution of 1:100

Usage

For Research Use Only. Not for use in diagnostic or therapeutic procedures.