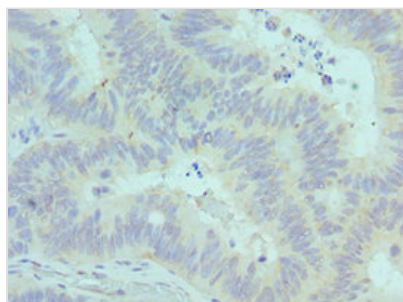




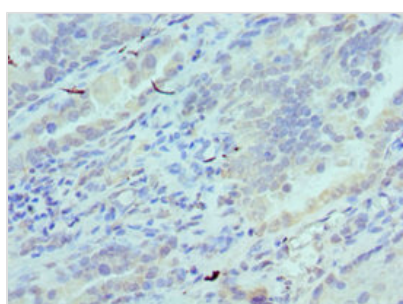
CADM1 Antibody

Product Code	CSB-PA004425ESR2HU
Storage	Upon receipt, store at -20°C or -80°C. Avoid repeated freeze.
Uniprot No.	Q9BY67
Immunogen	Recombinant Human Cell adhesion molecule 1 protein (45-344AA)
Raised In	Rabbit
Species Reactivity	Human
Tested Applications	ELISA, IHC; Recommended dilution: IHC:1:20-1:200
Form	Liquid
Conjugate	Non-conjugated
Storage Buffer	PBS with 0.02% sodium azide, 50% glycerol, pH7.3.
Purification Method	Antigen Affinity Purified
Isotype	IgG
Clonality	Polyclonal
Alias	Cell adhesion molecule 1 (Immunoglobulin superfamily member 4) (IGSF4) (Nectin-like protein 2) (NECL-2) (Spermatogenic immunoglobulin superfamily) (SgIgSF) (Synaptic cell adhesion molecule) (SynCAM) (Tumor suppressor in lung cancer 1) (TSLC-1), CADM1, IGSF4 IGSF4A NECL2 SYNCAM TSLC1
Immunogen Species	Homo sapiens (Human)
Research Area	Neuroscience
Target Names	CADM1

Image



Immunohistochemistry of paraffin-embedded human colon cancer using CSB-PA004425ESR2HU at dilution of 1:100



Immunohistochemistry of paraffin-embedded human lung cancer using CSB-PA004425ESR2HU at dilution of 1:100



Usage

For Research Use Only. Not for use in diagnostic or therapeutic procedures.