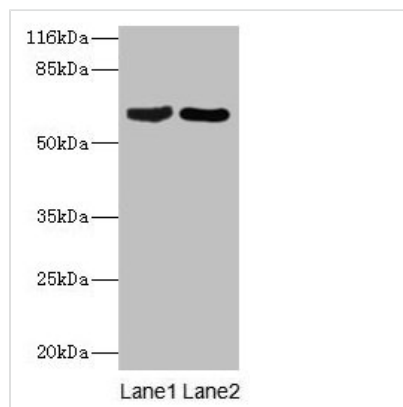




# CRMP1 Antibody

<b>Product Code</b>	CSB-PA623907HA01HU
<b>Storage</b>	Upon receipt, store at -20°C or -80°C. Avoid repeated freeze.
<b>Uniprot No.</b>	Q14194
<b>Immunogen</b>	Recombinant Human Dihydropyrimidinase-related protein 1 protein (1-572AA)
<b>Raised In</b>	Rabbit
<b>Species Reactivity</b>	Human, Mouse, Rat
<b>Tested Applications</b>	ELISA, WB; Recommended dilution: WB:1:1000-1:5000
<b>Form</b>	Liquid
<b>Conjugate</b>	Non-conjugated
<b>Storage Buffer</b>	Preservative: 0.03% Proclin 300 Constituents: 50% Glycerol, 0.01M PBS, PH 7.4
<b>Purification Method</b>	>95%, Protein G purified
<b>Isotype</b>	IgG
<b>Clonality</b>	Polyclonal
<b>Alias</b>	Dihydropyrimidinase-related protein 1 (DRP-1) (Collapsin response mediator protein 1) (CRMP-1) (Unc-33-like phosphoprotein 3) (ULIP-3), CRMP1, DPYSL1 ULIP3
<b>Immunogen Species</b>	Homo sapiens (Human)
<b>Research Area</b>	Neuroscience
<b>Target Names</b>	CRMP1

## Image



Western blot  
 All lanes: CRMP1 antibody at 2µg/ml  
 Lane 1: Rat brain tissue  
 Lane 2: Mouse lung tissue  
 Secondary  
 Goat polyclonal to rabbit IgG at 1/10000 dilution  
 Predicted band size: 63, 75 kDa  
 Observed band size: 63 kDa

## Usage

For Research Use Only. Not for use in diagnostic or therapeutic procedures.