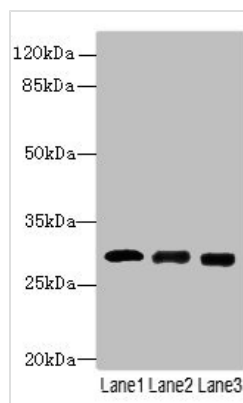




CELA3A Antibody

Product Code	CSB-PA007588LA01HU
Storage	Upon receipt, store at -20°C or -80°C. Avoid repeated freeze.
Uniprot No.	P09093
Immunogen	Recombinant Human Chymotrypsin-like elastase family member 3A protein (29-270AA)
Raised In	Rabbit
Species Reactivity	Human, Mouse
Tested Applications	ELISA, WB; Recommended dilution: WB:1:1000-1:5000
Form	Liquid
Conjugate	Non-conjugated
Storage Buffer	Preservative: 0.03% Proclin 300 Constituents: 50% Glycerol, 0.01M PBS, PH 7.4
Purification Method	>95%, Protein G purified
Isotype	IgG
Clonality	Polyclonal
Alias	Chymotrypsin-like elastase family member 3A (EC 3.4.21.70) (Elastase IIIA) (Elastase-3A) (Protease E), CELA3A, ELA3 ELA3A
Immunogen Species	Homo sapiens (Human)
Research Area	Cell Biology
Target Names	CELA3A

Image



Western blot

All lanes: CELA3A antibody at 14µg/ml

Lane 1: Mouse heart tissue

Lane 2: Mouse skeletal muscle tissue

Lane 3: Jurkat whole cell lysate

Secondary

Goat polyclonal to rabbit IgG at 1/10000 dilution

Predicted band size: 30 kDa

Observed band size: 30 kDa