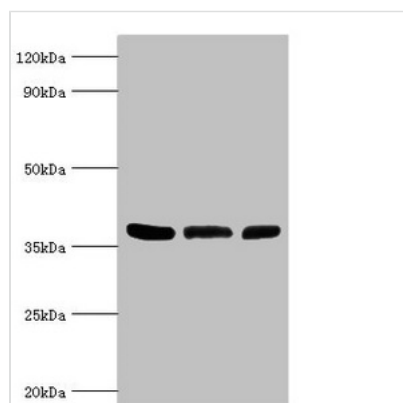




ARG2 Antibody

Product Code	CSB-PA002006ESR2HU
Storage	Upon receipt, store at -20°C or -80°C. Avoid repeated freeze.
Uniprot No.	P78540
Immunogen	Recombinant Human Arginase-2, mitochondrial protein (1-354AA)
Raised In	Rabbit
Species Reactivity	Human, Mouse
Tested Applications	ELISA, WB, IHC, IP; Recommended dilution: WB:1:500-1:5000, IHC:1:20-1:200, IP:1:200-1:2000
Form	Liquid
Conjugate	Non-conjugated
Storage Buffer	PBS with 0.02% sodium azide, 50% glycerol, pH7.3.
Purification Method	Antigen Affinity purified
Isotype	IgG
Clonality	Polyclonal
Alias	Arginase-2, mitochondrial (EC 3.5.3.1) (Arginase II) (Kidney-type arginase) (Non-hepatic arginase) (Type II arginase), ARG2
Immunogen Species	Homo sapiens (Human)
Research Area	Signal Transduction
Target Names	ARG2

Image



Western blot

All lanes: ARG2 antibody at 5µg/ml

Lane 1: Mouse liver tissue

Lane 2: 293T whole cell lysate

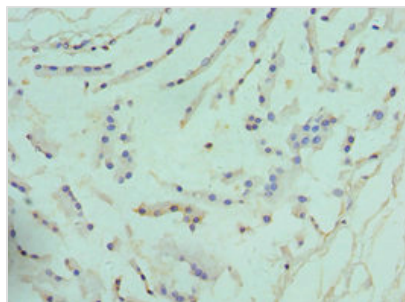
Lane 3: Mouse kidney tissue

Secondary

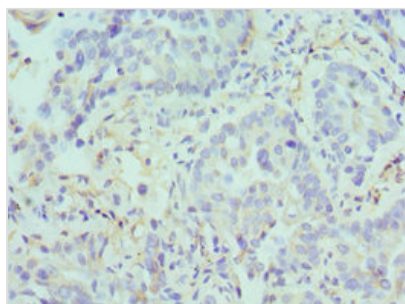
Goat polyclonal to rabbit IgG at 1/10000 dilution

Predicted band size: 39 kDa

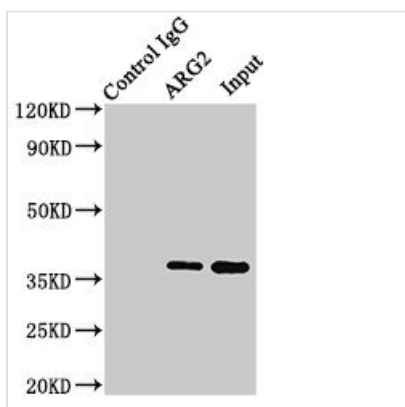
Observed band size: 39 kDa



Immunohistochemistry of paraffin-embedded human prostate tissue using CSB-PA002006ESR2HU at dilution of 1:100



Immunohistochemistry of paraffin-embedded human lung cancer using CSB-PA002006ESR2HU at dilution of 1:100



Immunoprecipitating ARG2 in HEK293 whole cell lysate

Lane 1: Rabbit control IgG (1 μ g) instead of CSB-PA002006ESR2HU in HEK293 whole cell lysate. For western blotting, a HRP-conjugated Protein G antibody was used as the secondary antibody (1/2000)

Lane 2: CSB-PA002006ESR2HU (8 μ g) + HEK293 whole cell lysate (500 μ g)

Lane 3: HEK293 whole cell lysate (10 μ g)

Usage

For Research Use Only. Not for use in diagnostic or therapeutic procedures.