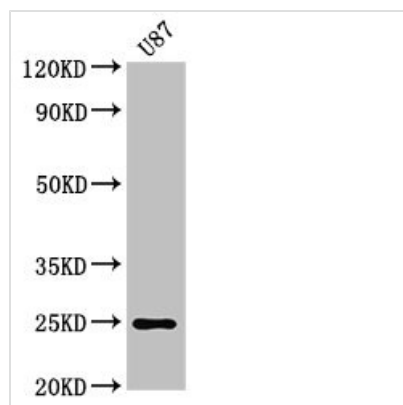




RGS2 Antibody

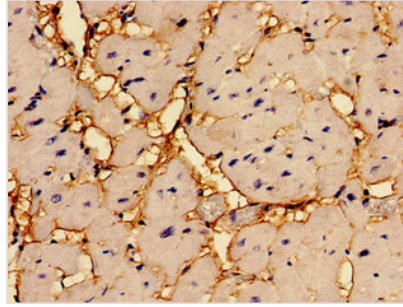
Product Code	CSB-PA019651LA01HU
Storage	Upon receipt, store at -20°C or -80°C. Avoid repeated freeze.
Uniprot No.	P41220
Immunogen	Recombinant Human Regulator of G-protein signaling 2 protein (1-211AA)
Raised In	Rabbit
Species Reactivity	Human
Tested Applications	ELISA, WB, IHC, IF; Recommended dilution: WB:1:500-1:5000, IHC:1:20-1:200, IF:1:50-1:200
Form	Liquid
Conjugate	Non-conjugated
Storage Buffer	Preservative: 0.03% Proclin 300 Constituents: 50% Glycerol, 0.01M PBS, PH 7.4
Purification Method	>95%, Protein G purified
Isotype	IgG
Clonality	Polyclonal
Alias	Regulator of G-protein signaling 2 (RGS2) (Cell growth-inhibiting gene 31 protein) (G0/G1 switch regulatory protein 8), RGS2, G0S8
Immunogen Species	Homo sapiens (Human)
Research Area	Epigenetics and Nuclear Signaling
Target Names	RGS2

Image

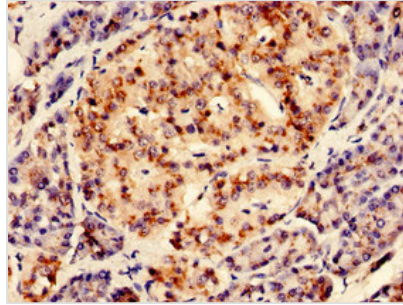


Western Blot

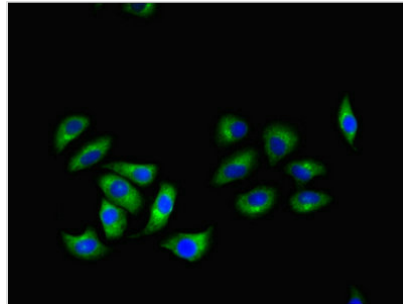
Positive WB detected in: U87 whole cell lysate
 All lanes: RGS2 antibody at 3µg/ml
 Secondary
 Goat polyclonal to rabbit IgG at 1/50000 dilution
 Predicted band size: 25, 24, 23, 21 kDa
 Observed band size: 25 kDa



Immunohistochemistry of paraffin-embedded human heart tissue using CSB-PA019651LA01HU at dilution of 1:100



Immunohistochemistry of paraffin-embedded human pancreatic tissue using CSB-PA019651LA01HU at dilution of 1:100



Immunofluorescent analysis of A549 cells using CSB-PA019651LA01HU at dilution of 1:100 and Alexa Fluor 488-conjugated AffiniPure Goat Anti-Rabbit IgG(H+L)

Usage

For Research Use Only. Not for use in diagnostic or therapeutic procedures.