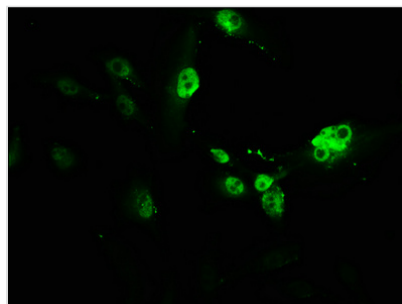




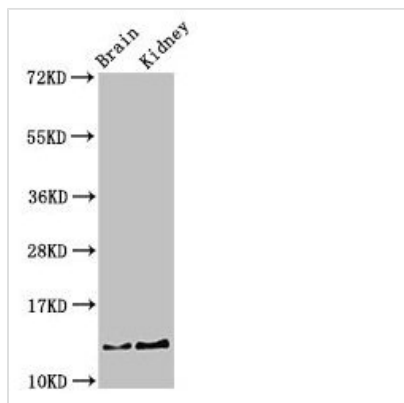
PVALB Antibody

Product Code	CSB-PA019092HA01HU
Storage	Upon receipt, store at -20°C or -80°C. Avoid repeated freeze.
Uniprot No.	P20472
Immunogen	Recombinant Human Parvalbumin alpha protein (2-110AA)
Raised In	Rabbit
Species Reactivity	Human, Mouse
Tested Applications	ELISA, WB, IHC, IF; Recommended dilution: WB:1:500-1:5000, IHC:1:20-1:200, IF:1:50-1:200
Form	Liquid
Conjugate	Non-conjugated
Storage Buffer	Preservative: 0.03% Proclin 300 Constituents: 50% Glycerol, 0.01M PBS, PH 7.4
Purification Method	>95%, Protein G purified
Isotype	IgG
Clonality	Polyclonal
Alias	Parvalbumin alpha, PVALB
Immunogen Species	Homo sapiens (Human)
Research Area	Neuroscience
Target Names	PVALB

Image



Immunofluorescence staining of U251 cells with CSB-PA019092HA01HU at 1:166, counter-stained with DAPI. The cells were fixed in 4% formaldehyde, permeabilized using 0.2% Triton X-100 and blocked in 10% normal Goat Serum. The cells were then incubated with the antibody overnight at 4°C. The secondary antibody was Alexa Fluor 488-conjugated AffiniPure Goat Anti-Rabbit IgG(H+L).

**Western Blot**

Positive WB detected in: Mouse brain tissue,
Mouse kidney tissue

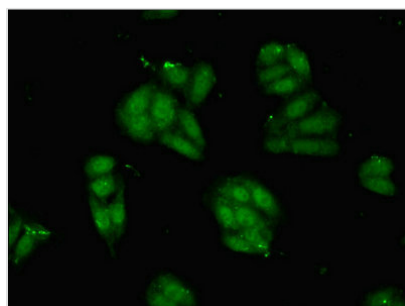
All lanes: PVALB antibody at 3 μ g/ml

Secondary

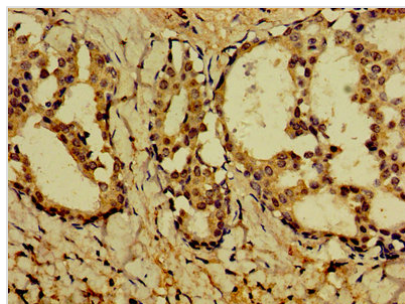
Goat polyclonal to rabbit IgG at 1/50000 dilution

Predicted band size: 13 kDa

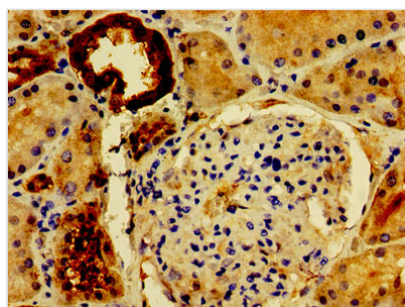
Observed band size: 13 kDa



Immunofluorescent analysis of HepG2 cells
using CSB-PA019092HA01HU at dilution of
1:100 and Alexa Fluor 488-conjugated
AffiniPure Goat Anti-Rabbit IgG(H+L)



Immunohistochemistry of paraffin-embedded
human breast cancer using CSB-
PA019092HA01HU at dilution of 1:100



Immunohistochemistry of paraffin-embedded
human kidney tissue using CSB-
PA019092HA01HU at dilution of 1:100

Usage

For Research Use Only. Not for use in diagnostic or therapeutic procedures.