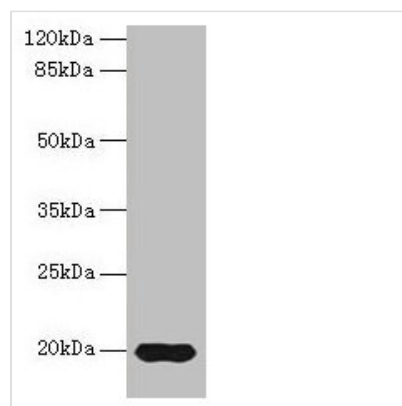




# Reg3g Antibody

<b>Product Code</b>	CSB-PA019549LA01RA
<b>Storage</b>	Upon receipt, store at -20°C or -80°C. Avoid repeated freeze.
<b>Uniprot No.</b>	P42854
<b>Immunogen</b>	Recombinant Rat Regenerating islet-derived protein 3-gamma protein (27-174AA)
<b>Raised In</b>	Rabbit
<b>Species Reactivity</b>	Rat, Mouse
<b>Tested Applications</b>	ELISA, WB; Recommended dilution: WB:1:1000-1:5000
<b>Form</b>	Liquid
<b>Conjugate</b>	Non-conjugated
<b>Storage Buffer</b>	Preservative: 0.03% Proclin 300 Constituents: 50% Glycerol, 0.01M PBS, PH 7.4
<b>Purification Method</b>	>95%, Protein G purified
<b>Isotype</b>	IgG
<b>Clonality</b>	Polyclonal
<b>Alias</b>	Regenerating islet-derived protein 3-gamma (REG-3-gamma) (Pancreatitis-associated protein 3) (Regenerating islet-derived protein III-gamma) (Reg III-gamma) [Cleaved into: Regenerating islet-derived protein 3-gamma 16.5 kDa form; Regenerating islet-derived protein 3-gamma 15 kDa form], Reg3g, Pap3
<b>Immunogen Species</b>	Rattus norvegicus (Rat)
<b>Research Area</b>	Immunology
<b>Target Names</b>	Reg3g

## Image



Western blot  
All lanes: Reg3g antibody at 14µg/ml + Mouse kidney tissue  
Secondary  
Goat polyclonal to rabbit IgG at 1/10000 dilution  
Predicted band size: 20 kDa  
Observed band size: 20 kDa