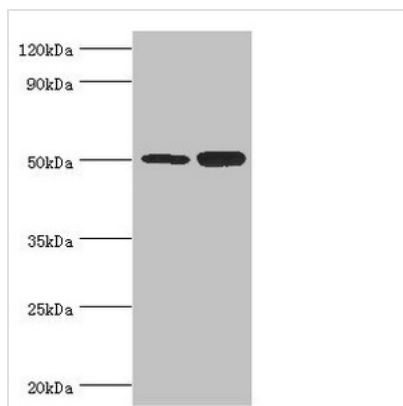




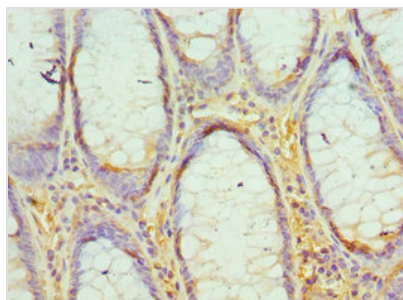
EED Antibody

Product Code	CSB-PA007408ESR1HU
Storage	Upon receipt, store at -20°C or -80°C. Avoid repeated freeze.
Uniprot No.	O75530
Immunogen	Recombinant Human Polycomb protein EED protein (1-300AA)
Raised In	Rabbit
Species Reactivity	Human
Tested Applications	ELISA, WB, IHC; Recommended dilution: WB:1:500-1:2000, IHC:1:20-1:200
Form	Liquid
Conjugate	Non-conjugated
Storage Buffer	PBS with 0.02% sodium azide, 50% glycerol, pH7.3.
Purification Method	Antigen Affinity Purified
Isotype	IgG
Clonality	Polyclonal
Alias	Polycomb protein EED (hEED) (Embryonic ectoderm development protein) (WD protein associating with integrin cytoplasmic tails 1) (WAIT-1), EED
Immunogen Species	Homo sapiens (Human)
Research Area	Epigenetics and Nuclear Signaling
Target Names	EED

Image



Western blot
 All lanes: Polycomb protein EED antibody at 4µg/ml
 Lane 1: HeLa whole cell lysate
 Lane 2: K562 whole cell lysate
 Secondary
 Goat polyclonal to rabbit IgG at 1/10000 dilution
 Predicted band size: 51, 54, 46 kDa
 Observed band size: 51 kDa



Immunohistochemistry of paraffin-embedded human colon cancer using CSB-PA007408ESR1HU at dilution of 1:100



Usage

For Research Use Only. Not for use in diagnostic or therapeutic procedures.