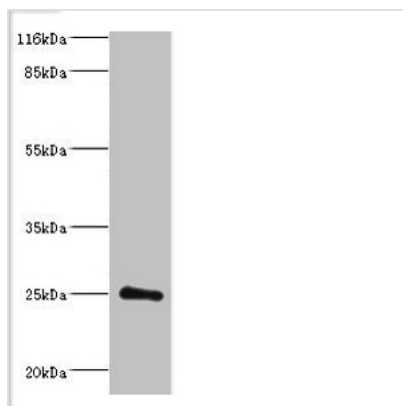




DGCR6L Antibody

Product Code	CSB-PA880133HA01HU
Storage	Upon receipt, store at -20°C or -80°C. Avoid repeated freeze.
Uniprot No.	Q9BY27
Immunogen	Recombinant Human Protein DGCR6L protein (1-220AA)
Raised In	Rabbit
Species Reactivity	Human, Mouse
Tested Applications	ELISA, WB; Recommended dilution: WB:1:1000-1:5000
Form	Liquid
Conjugate	Non-conjugated
Storage Buffer	Preservative: 0.03% Proclin 300 Constituents: 50% Glycerol, 0.01M PBS, PH 7.4
Purification Method	>95%, Protein G purified
Isotype	IgG
Clonality	Polyclonal
Alias	Protein DGCR6L (DiGeorge syndrome critical region 6-like protein), DGCR6L
Immunogen Species	Homo sapiens (Human)
Research Area	Others
Target Names	DGCR6L

Image



Western blot
All lanes: Protein DGCR6L antibody at 2µg/ml +
Mouse brain tissue
Secondary
Goat polyclonal to rabbit IgG at 1/10000 dilution
Predicted band size: 25 kDa
Observed band size: 25 kDa