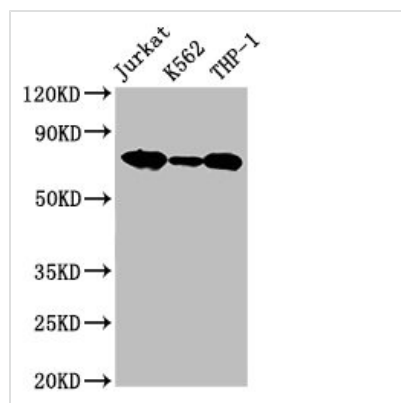




LCP1 Antibody

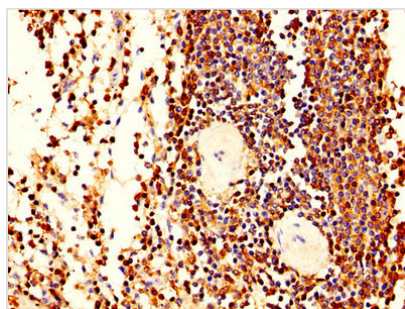
Product Code	CSB-PA012824HA01HU
Storage	Upon receipt, store at -20°C or -80°C. Avoid repeated freeze.
Uniprot No.	P13796
Immunogen	Recombinant Human Plastin-2 protein (2-627AA)
Raised In	Rabbit
Species Reactivity	Human
Tested Applications	ELISA, WB, IHC,IP; Recommended dilution: WB:1:1000-1:5000, IHC:1:200-1:500, IP:1:200-1:2000
Form	Liquid
Conjugate	Non-conjugated
Storage Buffer	Preservative: 0.03% Proclin 300 Constituents: 50% Glycerol, 0.01M PBS, PH 7.4
Purification Method	>95%, Protein G purified
Isotype	IgG
Clonality	Polyclonal
Alias	Plastin-2 (L-plastin) (LC64P) (Lymphocyte cytosolic protein 1) (LCP-1), LCP1, PLS2
Immunogen Species	Homo sapiens (Human)
Research Area	Signal Transduction
Target Names	LCP1

Image

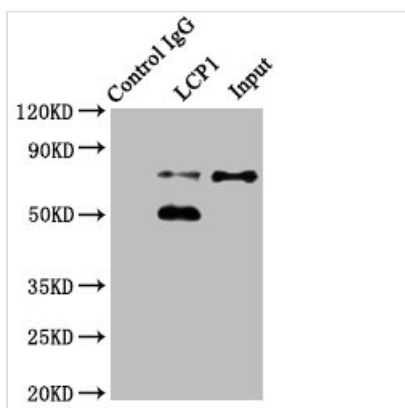


Western Blot

Positive WB detected in: Jurkat whole cell lysate, K562 whole cell lysate, THP-1 whole cell lysate
 All lanes: LCP1 antibody at 2.6µg/ml
 Secondary
 Goat polyclonal to rabbit IgG at 1/50000 dilution
 Predicted band size: 71, 22 kDa
 Observed band size: 71 kDa



IHC image of CSB-PA012824HA01HU diluted at 1:400 and staining in paraffin-embedded human spleen tissue performed on a Leica Bond™ system. After dewaxing and hydration, antigen retrieval was mediated by high pressure in a citrate buffer (pH 6.0). Section was blocked with 10% normal goat serum 30min at RT. Then primary antibody (1% BSA) was incubated at 4°C overnight. The primary is detected by a biotinylated secondary antibody and visualized using an HRP conjugated SP system.



Immunoprecipitating LCP1 in Jurkat whole cell lysate

Lane 1: Rabbit control IgG instead of CSB-PA012824HA01HU in Jurkat whole cell lysate. For western blotting, a HRP-conjugated Protein G antibody was used as the secondary antibody (1/2000)

Lane 2: CSB-PA012824HA01HU (8µg) + Jurkat whole cell lysate (500µg)

Lane 3: Jurkat whole cell lysate (20µg)

Usage

For Research Use Only. Not for use in diagnostic or therapeutic procedures.