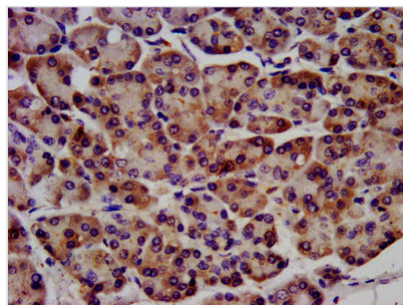




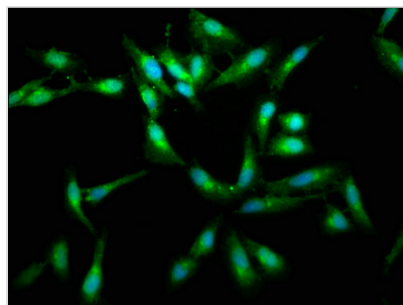
RAF1 Antibody

Product Code	CSB-PA019284LA01HU
Storage	Upon receipt, store at -20°C or -80°C. Avoid repeated freeze.
Uniprot No.	P04049
Immunogen	Recombinant Human RAF proto-oncogene serine/threonine-protein kinase protein (1-648AA)
Raised In	Rabbit
Species Reactivity	Human
Tested Applications	ELISA, WB, IHC, IF, IP; Recommended dilution: WB:1:500-1:5000, IHC:1:1000-1:2000, IF:1:200-1:500, IP:1:200-1:2000
Form	Liquid
Conjugate	Non-conjugated
Storage Buffer	Preservative: 0.03% Proclin 300 Constituents: 50% Glycerol, 0.01M PBS, PH 7.4
Purification Method	>95%, Protein G purified
Isotype	IgG
Clonality	Polyclonal
Alias	RAF proto-oncogene serine/threonine-protein kinase (EC 2.7.11.1) (Proto-oncogene c-RAF) (cRaf) (Raf-1), RAF1, RAF
Immunogen Species	Homo sapiens (Human)
Research Area	Signal Transduction
Target Names	RAF1

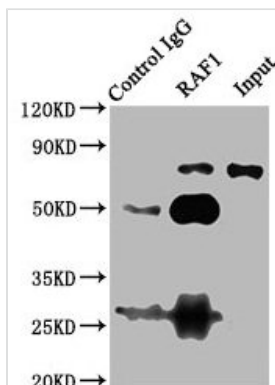
Image



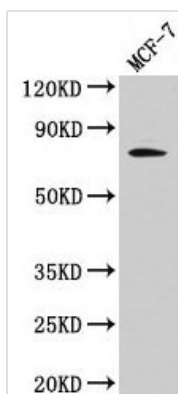
IHC image of CSB-PA019284LA01HU diluted at 1:1200 and staining in paraffin-embedded human pancreatic tissue performed on a Leica BondTM system. After dewaxing and hydration, antigen retrieval was mediated by high pressure in a citrate buffer (pH 6.0). Section was blocked with 10% normal goat serum 30min at RT. Then primary antibody (1% BSA) was incubated at 4°C overnight. The primary is detected by a biotinylated secondary antibody and visualized using an HRP conjugated SP system.



Immunofluorescence staining of HeLa cells with CSB-PA019284LA01HU at 1:400, counter-stained with DAPI. The cells were fixed in 4% formaldehyde, permeabilized using 0.2% Triton X-100 and blocked in 10% normal Goat Serum. The cells were then incubated with the antibody overnight at 4°C. The secondary antibody was Alexa Fluor 488-conjugated AffiniPure Goat Anti-Rabbit IgG(H+L).



Immunoprecipitating RAF1 in 293T whole cell lysate
 Lane 1: Rabbit control IgG (1μg) instead of CSB-PA019284LA01HU in 293T whole cell lysate. For western blotting, a HRP-conjugated Protein G antibody was used as the secondary antibody (1/2000)
 Lane 2: CSB-PA019284LA01HU (6μg) + 293T whole cell lysate (500μg)
 Lane 3: 293T whole cell lysate (10μg)



Western Blot
 Positive WB detected in: MCF-7 whole cell lysate
 All lanes: RAF1 antibody at 4μg/ml
 Secondary
 Goat polyclonal to rabbit IgG at 1/50000 dilution
 Predicted band size: 74, 76 kDa
 Observed band size: 74 kDa