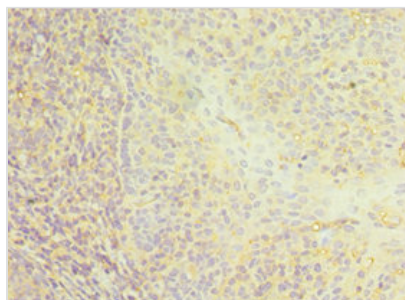




CD22 Antibody

| | |
|----------------------------|--|
| Product Code | CSB-PA004900ESR1HU |
| Storage | Upon receipt, store at -20°C or -80°C. Avoid repeated freeze. |
| Uniprot No. | P20273 |
| Immunogen | Recombinant Human B-cell receptor CD22 protein (708-847AA) |
| Raised In | Rabbit |
| Species Reactivity | Human |
| Tested Applications | ELISA, IHC; Recommended dilution: IHC:1:20-1:200 |
| Form | Liquid |
| Conjugate | Non-conjugated |
| Storage Buffer | PBS with 0.02% sodium azide, 50% glycerol, pH7.3. |
| Purification Method | Antigen Affinity Purified |
| Isotype | IgG |
| Clonality | Polyclonal |
| Alias | B-cell receptor CD22 (B-lymphocyte cell adhesion molecule) (BL-CAM) (Sialic acid-binding Ig-like lectin 2) (Siglec-2) (T-cell surface antigen Leu-14) (CD antigen CD22), CD22, SIGLEC2 |
| Immunogen Species | Homo sapiens (Human) |
| Research Area | Immunology |
| Target Names | CD22 |

Image



Immunohistochemistry of paraffin-embedded human tonsil tissue using CSB-PA004900ESR1HU at dilution of 1:100

Usage

For Research Use Only. Not for use in diagnostic or therapeutic procedures.