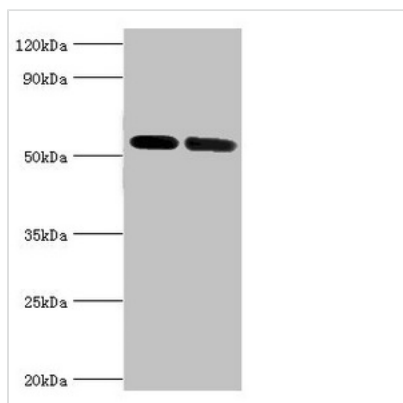




ATP6V1B1 Antibody

Product Code	CSB-PA002397ESR1HU
Storage	Upon receipt, store at -20°C or -80°C. Avoid repeated freeze.
Uniprot No.	P15313
Immunogen	Recombinant Human V-type proton ATPase subunit B, kidney isoform protein (1-280AA)
Raised In	Rabbit
Species Reactivity	Human, Mouse
Tested Applications	ELISA, WB, IHC; Recommended dilution: WB:1:500-1:2000, IHC:1:20-1:200
Form	Liquid
Conjugate	Non-conjugated
Storage Buffer	PBS with 0.02% sodium azide, 50% glycerol, pH7.3.
Purification Method	Antigen Affinity Purified
Isotype	IgG
Clonality	Polyclonal
Alias	V-type proton ATPase subunit B, kidney isoform (V-ATPase subunit B 1) (Endomembrane proton pump 58 kDa subunit) (Vacuolar proton pump subunit B 1), ATP6V1B1, ATP6B1 VATB VPP3
Immunogen Species	Homo sapiens (Human)
Research Area	Signal Transduction
Target Names	ATP6V1B1

Image



Western blot

All lanes: V-type proton ATPase subunit B, kidney isoform antibody at 7µg/ml

Lane 1: Mouse kidney tissue

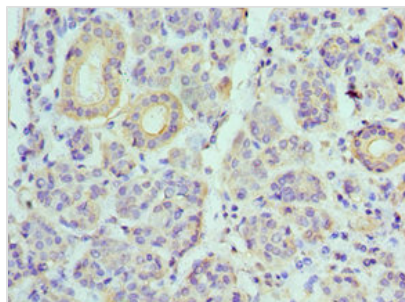
Lane 2: 293T whole cell lysate

Secondary

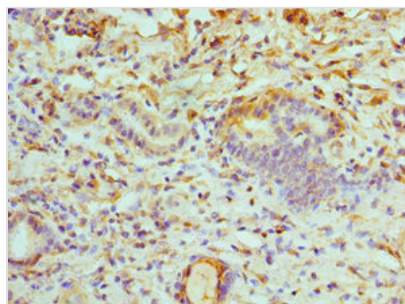
Goat polyclonal to rabbit IgG at 1/10000 dilution

Predicted band size: 57 kDa

Observed band size: 57 kDa



Immunohistochemistry of paraffin-embedded human salivary gland tissue using CSB-PA002397ESR1HU at dilution of 1:100



Immunohistochemistry of paraffin-embedded human kidney tissue using CSB-PA002397ESR1HU at dilution of 1:100

Usage

For Research Use Only. Not for use in diagnostic or therapeutic procedures.