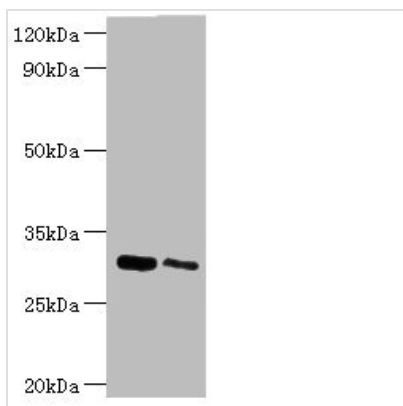




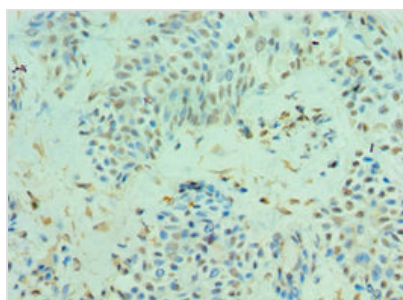
CLIC4 Antibody

Product Code	CSB-PA005549ESR2HU
Storage	Upon receipt, store at -20°C or -80°C. Avoid repeated freeze.
Uniprot No.	Q9Y696
Immunogen	Recombinant Human Chloride intracellular channel protein 4 protein (1-253AA)
Raised In	Rabbit
Species Reactivity	Human, Mouse
Tested Applications	ELISA, WB, IHC; Recommended dilution: WB:1:500-1:2000, IHC:1:20-1:200
Form	Liquid
Conjugate	Non-conjugated
Storage Buffer	PBS with 0.02% sodium azide, 50% glycerol, pH7.3.
Purification Method	Antigen Affinity purified
Isotype	IgG
Clonality	Polyclonal
Alias	Chloride intracellular channel protein 4 (Intracellular chloride ion channel protein p64H1), CLIC4
Immunogen Species	Homo sapiens (Human)
Research Area	Cell Biology
Target Names	CLIC4

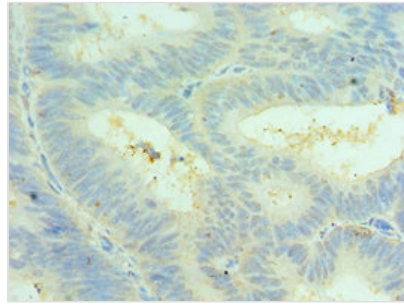
Image



Western blot
 All lanes: Chloride intracellular channel protein 4 antibody at 5µg/ml
 Lane 1: Mouse kidney tissue
 Lane 2: Mouse ovarian tissue
 Secondary
 Goat polyclonal to rabbit IgG at 1/10000 dilution
 Predicted band size: 29 kDa
 Observed band size: 29 kDa



Immunohistochemistry of paraffin-embedded human breast cancer using CSB-PA005549ESR2HU at dilution of 1:100



Immunohistochemistry of paraffin-embedded human colon cancer using CSB-PA005549ESR2HU at dilution of 1:100

Usage

For Research Use Only. Not for use in diagnostic or therapeutic procedures.