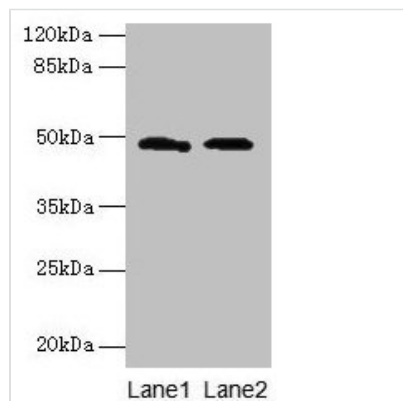




surA Antibody

Product Code	CSB-PA359693HA01ENV
Storage	Upon receipt, store at -20°C or -80°C. Avoid repeated freeze.
Uniprot No.	P0ABZ6
Immunogen	Recombinant Escherichia coli Chaperone SurA protein (21-428AA)
Raised In	Rabbit
Species Reactivity	Escherichia coli
Tested Applications	ELISA, WB; Recommended dilution: WB:1:1000-1:5000
Form	Liquid
Conjugate	Non-conjugated
Storage Buffer	Preservative: 0.03% Proclin 300 Constituents: 50% Glycerol, 0.01M PBS, PH 7.4
Purification Method	>95%, Protein G purified
Isotype	IgG
Clonality	Polyclonal
Alias	Chaperone SurA (Peptidyl-prolyl cis-trans isomerase SurA) (PPlase SurA) (EC 5.2.1.8) (Rotamase SurA) (Survival protein A), surA
Immunogen Species	Escherichia coli
Research Area	Others
Target Names	surA

Image



Western blot
 All lanes: surA antibody at 12µg/ml
 Lane 1: 293T whole cell lysate
 Lane 2: DH5α whole cell lysate
 Secondary
 Goat polyclonal to rabbit IgG at 1/10000 dilution
 Predicted band size: 48 kDa
 Observed band size: 48 kDa

Usage

For Research Use Only. Not for use in diagnostic or therapeutic procedures.