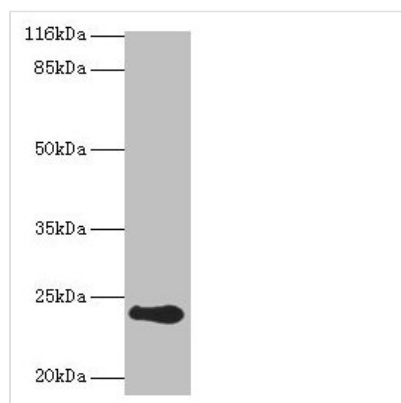




RCVRN Antibody

Product Code	CSB-PA019519HA01HU
Storage	Upon receipt, store at -20°C or -80°C. Avoid repeated freeze.
Uniprot No.	P35243
Immunogen	Recombinant Human Recoverin protein (2-200AA)
Raised In	Rabbit
Species Reactivity	Human, Mouse
Tested Applications	ELISA, WB; Recommended dilution: WB:1:1000-1:5000
Form	Liquid
Conjugate	Non-conjugated
Storage Buffer	Preservative: 0.03% Proclin 300 Constituents: 50% Glycerol, 0.01M PBS, PH 7.4
Purification Method	>95%, Protein G purified
Isotype	IgG
Clonality	Polyclonal
Alias	Recoverin (Cancer-associated retinopathy protein) (Protein CAR), RCVRN, RCV1
Immunogen Species	Homo sapiens (Human)
Research Area	Signal Transduction
Target Names	RCVRN

Image



Western blot
 All lanes: RCVRN antibody at 2µg/ml + Mouse eye tissue
 Secondary
 Goat polyclonal to rabbit IgG at 1/10000 dilution
 Predicted band size: 24 kDa
 Observed band size: 24 kDa

Usage

For Research Use Only. Not for use in diagnostic or therapeutic procedures.