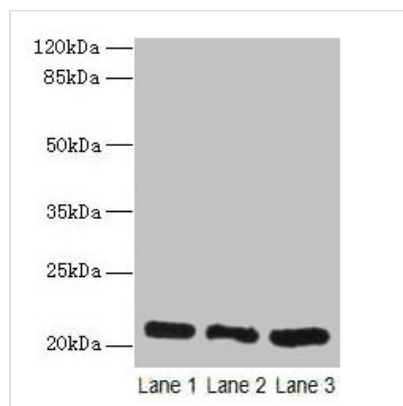




# GM2A Antibody

<b>Product Code</b>	CSB-PA02379A0Rb
<b>Storage</b>	Upon receipt, store at -20°C or -80°C. Avoid repeated freeze.
<b>Uniprot No.</b>	P17900
<b>Immunogen</b>	Recombinant Human Ganglioside GM2 activator protein (32-193AA)
<b>Raised In</b>	Rabbit
<b>Species Reactivity</b>	Human, Mouse, Rat
<b>Tested Applications</b>	ELISA, WB, IHC, IP; Recommended dilution: WB:1:1000-5000, IHC:1:20-1:200, IP:1:200-1:2000
<b>Form</b>	Liquid
<b>Conjugate</b>	Non-conjugated
<b>Storage Buffer</b>	Preservative: 0.03% Proclin 300 Constituents: 50% Glycerol, 0.01M PBS, PH 7.4
<b>Purification Method</b>	>95%, Protein G purified
<b>Isotype</b>	IgG
<b>Clonality</b>	Polyclonal
<b>Alias</b>	Ganglioside GM2 activator (Cerebroside sulfate activator protein) (GM2-AP) (Sphingolipid activator protein 3) (SAP-3) [Cleaved into: Ganglioside GM2 activator isoform short], GM2A
<b>Immunogen Species</b>	Homo sapiens (Human)
<b>Research Area</b>	Tags & Cell Markers
<b>Target Names</b>	GM2A

## Image



### Western blot

All lanes: GM2A antibody at 10µg/ml

Lane 1: Rat liver tissue

Lane 2: Mouse stomach tissue

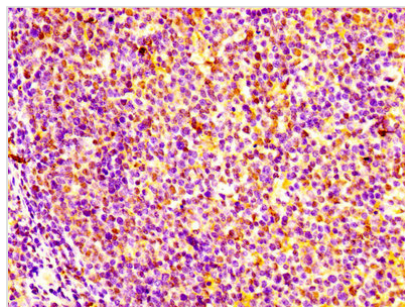
Lane 3: Mouse small intestine tissue

Secondary

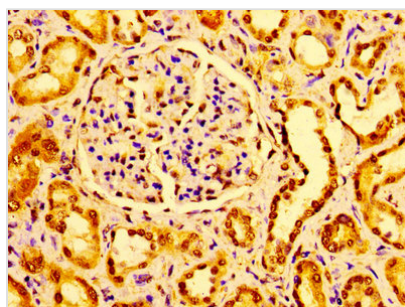
Goat polyclonal to rabbit IgG at 1/10000 dilution

Predicted band size: 21 kDa

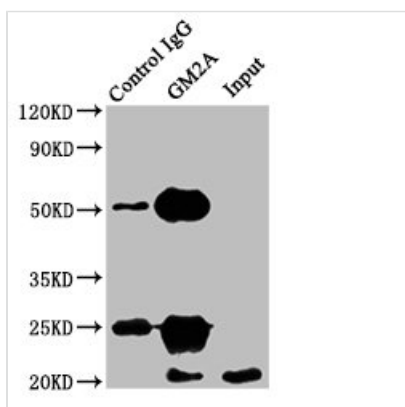
Observed band size: 21 kDa



Immunohistochemistry of paraffin-embedded human tonsil tissue using CSB-PA02379A0Rb at dilution of 1:100



Immunohistochemistry of paraffin-embedded human kidney tissue using CSB-PA02379A0Rb at dilution of 1:100



Immunoprecipitating GM2A in HEK293 whole cell lysate

Lane 1: Rabbit control IgG instead of CSB-PA02379A0Rb in HEK293 whole cell lysate. For western blotting, a HRP-conjugated Protein G antibody was used as the secondary antibody (1/2000)

Lane 2: CSB-PA02379A0Rb (8µg) + HEK293 whole cell lysate (500µg)

Lane 3: HEK293 whole cell lysate (10µg)

## Usage

For Research Use Only. Not for use in diagnostic or therapeutic procedures.