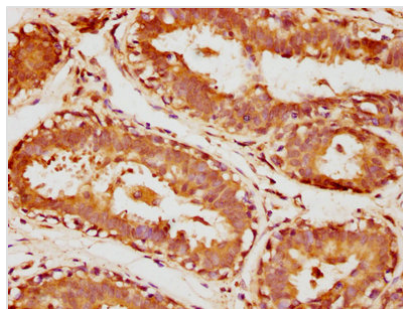




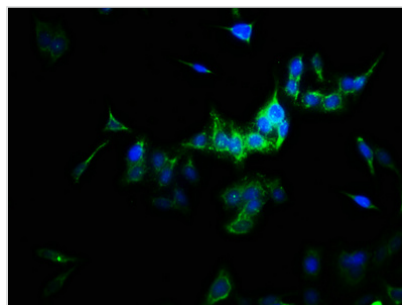
SULT1A3 Antibody

Product Code	CSB-PA00887A0Rb
Storage	Upon receipt, store at -20°C or -80°C. Avoid repeated freeze.
Uniprot No.	P0DMM9
Immunogen	Recombinant Human Sulfotransferase 1A3 protein (1-295AA)
Raised In	Rabbit
Species Reactivity	Human, Mouse
Tested Applications	ELISA, WB, IHC, IF; Recommended dilution: WB:1:1000-1:5000, IHC:1:500-1:1000, IF:1:50-1:200
Form	Liquid
Conjugate	Non-conjugated
Storage Buffer	Preservative: 0.03% Proclin 300 Constituents: 50% Glycerol, 0.01M PBS, PH 7.4
Purification Method	>95%, Protein G purified
Isotype	IgG
Clonality	Polyclonal
Alias	Sulfotransferase 1A3 (ST1A3) (EC 2.8.2.1) (Aryl sulfotransferase 1A3/1A4) (Catecholamine-sulfating phenol sulfotransferase) (HAST3) (M-PST) (Monoamine-sulfating phenol sulfotransferase) (Placental estrogen sulfotransferase) (Sulfotransferase 1A3/1A4) (Sulfotransferase, monoamine-preferring) (Thermolabile phenol sulfotransferase) (TL-PST), SULT1A3, STM
Immunogen Species	Homo sapiens (Human)
Research Area	Others
Target Names	SULT1A3

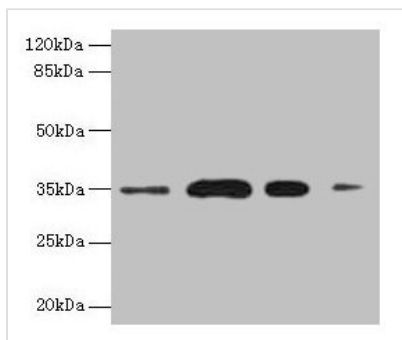
Image



IHC image of CSB-PA00887A0Rb diluted at 1:1000 and staining in paraffin-embedded human breast cancer performed on a Leica BondTM system. After dewaxing and hydration, antigen retrieval was mediated by high pressure in a citrate buffer (pH 6.0). Section was blocked with 10% normal goat serum 30min at RT. Then primary antibody (1% BSA) was incubated at 4°C overnight. The primary is detected by a biotinylated secondary antibody and visualized using an HRP conjugated SP system.



Immunofluorescence staining of HepG2 cells with CSB-PA00887A0Rb at 1:166, counter-stained with DAPI. The cells were fixed in 4% formaldehyde, permeabilized using 0.2% Triton X-100 and blocked in 10% normal Goat Serum. The cells were then incubated with the antibody overnight at 4°C. The secondary antibody was Alexa Fluor 488-conjugated AffiniPure Goat Anti-Rabbit IgG(H+L).



Western blot

All lanes: SULT1A3 antibody at 20µg/ml

Lane 1: A549 whole cell lysate

Lane 2: Colo320 whole cell lysate

Lane 3: Mouse brain tissue

Lane 4: Mouse kidney tissue

Secondary

Goat polyclonal to rabbit IgG at 1/10000 dilution

Predicted band size: 35, 23 kDa

Observed band size: 35 kDa