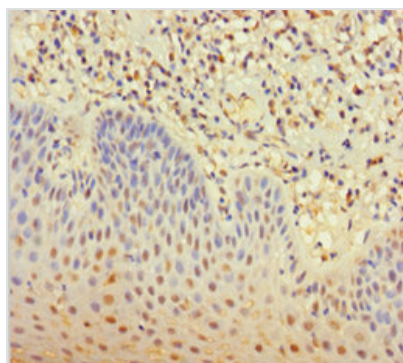




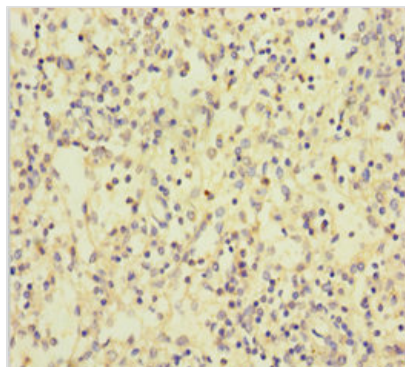
CLEC4D Antibody

Product Code	CSB-PA841219LA01HU
Storage	Upon receipt, store at -20°C or -80°C. Avoid repeated freeze.
Uniprot No.	Q8WXI8
Immunogen	Recombinant Human C-type lectin domain family 4 member D protein (39-215AA)
Raised In	Rabbit
Species Reactivity	Human
Tested Applications	ELISA, IHC; Recommended dilution: IHC:1:20-1:200
Form	Liquid
Conjugate	Non-conjugated
Storage Buffer	Preservative: 0.03% Proclin 300 Constituents: 50% Glycerol, 0.01M PBS, PH 7.4
Purification Method	>95%, Protein G purified
Isotype	IgG
Clonality	Polyclonal
Alias	C-type lectin domain family 4 member D (C-type lectin superfamily member 8) (C-type lectin-like receptor 6) (CLEC-6), CLEC4D, CLECSF8 MCL
Immunogen Species	Homo sapiens (Human)
Research Area	Immunology
Target Names	CLEC4D

Image



Immunohistochemistry of paraffin-embedded human tonsil tissue using CSB-PA841219LA01HU at dilution of 1:100



Immunohistochemistry of paraffin-embedded human spleen tissue using CSB-PA841219LA01HU at dilution of 1:100

Usage

For Research Use Only. Not for use in diagnostic or therapeutic procedures.