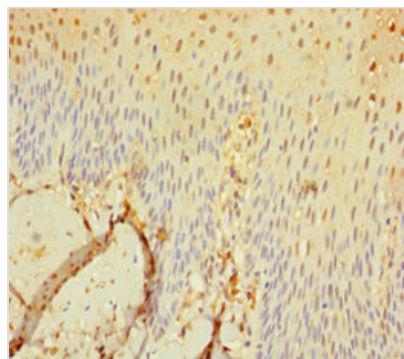




SEC11C Antibody

Product Code	CSB-PA871609LA01HU
Storage	Upon receipt, store at -20°C or -80°C. Avoid repeated freeze.
Uniprot No.	Q9BY50
Immunogen	Recombinant Human Signal peptidase complex catalytic subunit SEC11C protein (49-192AA)
Raised In	Rabbit
Species Reactivity	Human
Tested Applications	ELISA, IHC; Recommended dilution: IHC:1:20-1:200
Form	Liquid
Conjugate	Non-conjugated
Storage Buffer	Preservative: 0.03% Proclin 300 Constituents: 50% Glycerol, 0.01M PBS, PH 7.4
Purification Method	>95%, Protein G purified
Isotype	IgG
Clonality	Polyclonal
Alias	Signal peptidase complex catalytic subunit SEC11C (EC 3.4.21.89) (Microsomal signal peptidase 21 kDa subunit) (SPase 21 kDa subunit) (SEC11 homolog C) (SEC11-like protein 3) (SPC21), SEC11C, SEC11L3 SPC21 SPCS4C
Immunogen Species	Homo sapiens (Human)
Research Area	Others
Target Names	SEC11C

Image



Immunohistochemistry of paraffin-embedded human tonsil tissue using CSB-PA871609LA01HU at dilution of 1:100

Usage

For Research Use Only. Not for use in diagnostic or therapeutic procedures.