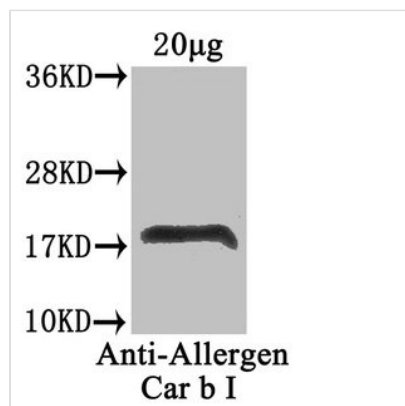




# Major pollen allergen Car b 1 isoforms 1A and 1B Antibody

|                            |   |
|----------------------------|---|
| <b>Product Code</b>        | CSB-PA330956LA01CEC   |
| <b>Storage</b>             | Upon receipt, store at -20°C or -80°C. Avoid repeated freeze.                                   |
| <b>Uniprot No.</b>         | P38949  |
| <b>Immunogen</b>           | Recombinant Carpinus betulus Major pollen allergen Car b 1 isoforms 1A and 1B protein (2-160AA) |
| <b>Raised In</b>           | Rabbit  |
| <b>Species Reactivity</b>  | Carpinus betulus  |
| <b>Tested Applications</b> | ELISA, WB; Recommended dilution: WB:1:500-1:2000  |
| <b>Form</b>                | Liquid  |
| <b>Conjugate</b>           | Non-conjugated  |
| <b>Storage Buffer</b>      | Preservative: 0.03% Proclin 300<br>Constituents: 50% Glycerol, 0.01M PBS, PH 7.4                |
| <b>Purification Method</b> | >95%, Protein G purified  |
| <b>Isotype</b>             | IgG   |
| <b>Clonality</b>           | Polyclonal  |
| <b>Alias</b>               | Major pollen allergen Car b 1 isoforms 1A and 1B (Allergen Car b I) (allergen Car b 1)          |
| <b>Immunogen Species</b>   | Carpinus betulus  |
| <b>Research Area</b>       | Others  |

## Image



Western Blot  
Positive WB detected in: Carpinus betulus (20µg)  
All lanes: Allergen Car b I antibody at 4µg/ml  
Secondary  
Goat polyclonal to rabbit IgG at 1/50000 dilution  
Predicted band size: 18 kDa  
Observed band size: 18 kDa