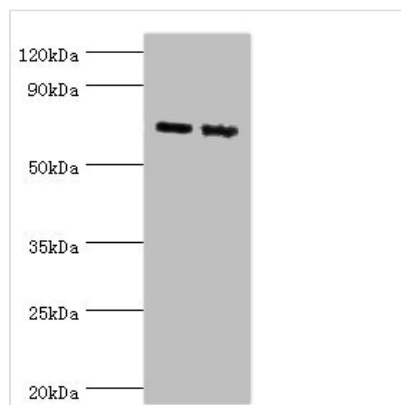




# APLP1 Antibody

<b>Product Code</b>	CSB-PA001911ESR1HU
<b>Storage</b>	Upon receipt, store at -20°C or -80°C. Avoid repeated freeze.
<b>Uniprot No.</b>	P51693
<b>Immunogen</b>	Recombinant Human Amyloid-like protein 1 protein (39-300AA)
<b>Raised In</b>	Rabbit
<b>Species Reactivity</b>	Human, Mouse
<b>Tested Applications</b>	ELISA, WB; Recommended dilution: WB:1:500-1:2000
<b>Form</b>	Liquid
<b>Conjugate</b>	Non-conjugated
<b>Storage Buffer</b>	PBS with 0.02% sodium azide, 50% glycerol, pH7.3.
<b>Purification Method</b>	Antigen Affinity Purified
<b>Isotype</b>	IgG
<b>Clonality</b>	Polyclonal
<b>Alias</b>	Amyloid-like protein 1 (APLP) (APLP-1) [Cleaved into: C30], APLP1
<b>Immunogen Species</b>	Homo sapiens (Human)
<b>Research Area</b>	Neuroscience
<b>Target Names</b>	APLP1

## Image



### Western blot

All lanes: Amyloid-like protein 1 antibody at 6µg/ml

Lane 1: Mouse brain tissue

Lane 2: A549 whole cell lysate

Secondary

Goat polyclonal to rabbit IgG at 1/10000 dilution

Predicted band size: 72 kDa

Observed band size: 72 kDa

## Usage

For Research Use Only. Not for use in diagnostic or therapeutic procedures.