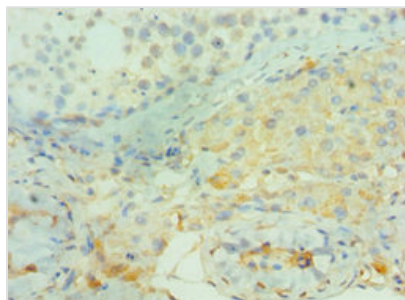




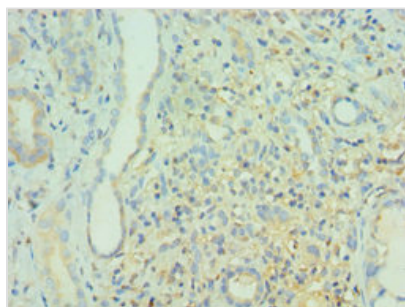
BIN1 Antibody

Product Code	CSB-PA002700ESR1HU
Storage	Upon receipt, store at -20°C or -80°C. Avoid repeated freeze.
Uniprot No.	O00499
Immunogen	Recombinant Human Myc box-dependent-interacting protein 1 protein (414-593AA)
Raised In	Rabbit
Species Reactivity	Human
Tested Applications	ELISA, IHC; Recommended dilution: IHC:1:20-1:200
Form	Liquid
Conjugate	Non-conjugated
Storage Buffer	PBS with 0.02% sodium azide, 50% glycerol, pH7.3.
Purification Method	Antigen Affinity Purified
Isotype	IgG
Clonality	Polyclonal
Alias	Myc box-dependent-interacting protein 1 (Amphiphysin II) (Amphiphysin-like protein) (Box-dependent myc-interacting protein 1) (Bridging integrator 1), BIN1, AMPHL
Immunogen Species	Homo sapiens (Human)
Research Area	Cell Biology
Target Names	BIN1

Image



Immunohistochemistry of paraffin-embedded human testis tissue using CSB-PA002700ESR1HU at dilution of 1:100



Immunohistochemistry of paraffin-embedded human kidney tissue using CSB-PA002700ESR1HU at dilution of 1:100