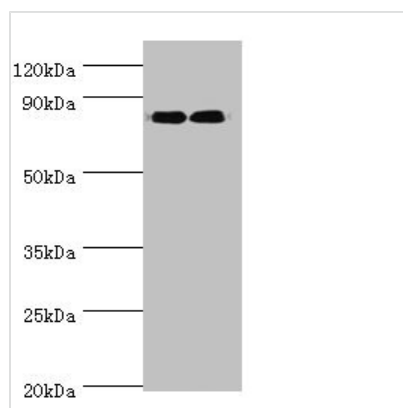




# ANAPC5 Antibody

<b>Product Code</b>	CSB-PA892130ESR1HU
<b>Storage</b>	Upon receipt, store at -20°C or -80°C. Avoid repeated freeze.
<b>Uniprot No.</b>	Q9UJX4
<b>Immunogen</b>	Recombinant Human Anaphase-promoting complex subunit 5 protein (1-250AA)
<b>Raised In</b>	Rabbit
<b>Species Reactivity</b>	Human
<b>Tested Applications</b>	ELISA, WB, IHC; Recommended dilution: WB:1:200-1:1000, IHC:1:20-1:200
<b>Form</b>	Liquid
<b>Conjugate</b>	Non-conjugated
<b>Storage Buffer</b>	PBS with 0.02% sodium azide, 50% glycerol, pH7.3.
<b>Purification Method</b>	Antigen Affinity Purified
<b>Isotype</b>	IgG
<b>Clonality</b>	Polyclonal
<b>Alias</b>	Anaphase-promoting complex subunit 5 (APC5) (Cyclosome subunit 5), ANAPC5, APC5
<b>Immunogen Species</b>	Homo sapiens (Human)
<b>Research Area</b>	Cell Biology
<b>Target Names</b>	ANAPC5

## Image



### Western blot

All lanes: ANAPC5 antibody at 2 $\mu$ g/ml

Lane 1: 293T whole cell lysate

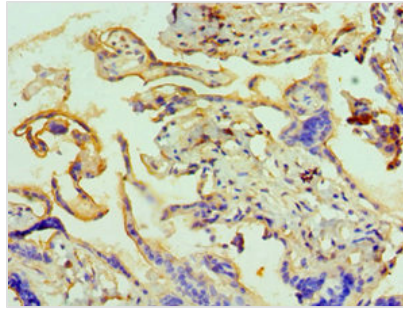
Lane 2: NIH/3T3 whole cell lysate

Secondary

Goat polyclonal to rabbit IgG at 1/10000 dilution

Predicted band size: 86, 26, 73 kDa

Observed band size: 86 kDa



Immunohistochemistry of paraffin-embedded human placenta tissue using CSB-PA892130ESR1HU at dilution of 1:100